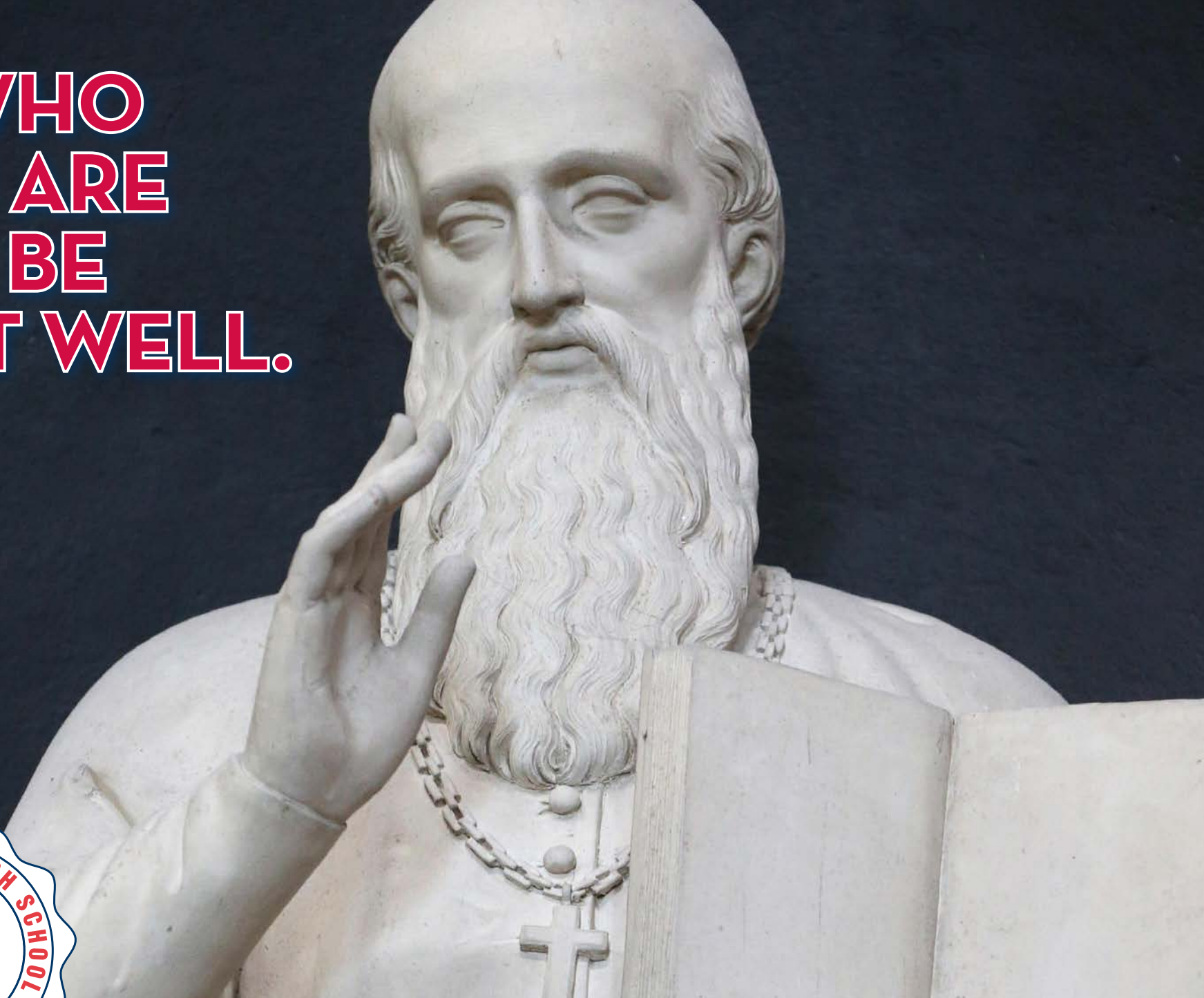


**BE WHO
YOU ARE
AND BE
THAT WELL.**



**THE FRIENDS OF FATHER JUDGE, INC.
2018-2019 MAGAZINE AND ANNUAL REPORT**

IN THIS ISSUE

- 2 From Our President
- 3 School Administration
- 4 Crusader Weekend
- 4 2019 Hall of Fame Induction
- 6 The Salesian Seven
- 6 Model UN Travels to D.C.
- 6 Original Artwork Gifted to FJ
- 6 Class of 2019
- 7 Graduation
- 7 Honors Convocation
- 7 Judge Relays
- 8 Donor Spotlight:
Rob Karalius '84
- 9 Class Captain Program
- 10 Athletics
- 10 The Maguire Foundation
- 11 President's Cup Challenge
- 11 CTE Program Receives
\$350,000 in Grants
- 11 Thank You to Our
Salesian Brothers
- 12 Seaport Senior Scholarship
- 12 2019 All Catholic Chorus
- 12 Crusader Business Network
- 13 12th Man Club
- 13 Room Dedicated in Honor
of Tim Fehrle '68
- 14 Crusaders Volunteer to
Greet the Tour of Honor
- 14 Tax Credits = Scholarships
- 15 Partnership with DeSales
- 15 Board Members
- 15 Report of Giving

PLEASE NOTE

*Many advancements and changes have occurred at our school during the past year, and we take this opportunity to present a Report of Giving that includes donations received from **July 1, 2018 to June 30, 2019**. We thank all our graduates and friends for their commitment to Catholic education and their generosity to Father Judge High School.*

Dear Alumni and Friends,

I am very proud and humbled to share this Annual Report and Magazine with you as our fundraising efforts continue to gain momentum. Our 2018-19 results surpassed all goals and expectations thanks to the hard work of our Development Office and the generosity of our passionate supporters. All of this means that Father Judge stands on firm financial ground which will allow us to provide the best possible education to our deserving young Crusaders.

In last year's report, I wrote to you about the creation of a Strategic Plan and our desire to expand educational offerings and partnerships, all while staying committed to our core mission of developing Salesian Gentlemen. I am very happy to inform you that Year 1 of our Strategic Plan was successfully implemented in the 2018-19 school year, and this included several highlights:

- The Archdiocesan Educational Fund awarded us a grant in the amount of \$150,000 for the 2019-2020 academic year. The award supports the inaugural welding program within our new Career & Technical (CTE) curriculum. When we received the award in April, it was the largest privately-funded grant in school history.
- In July, the Connelly Foundation awarded us a \$200,000 grant for the 2019-2020 academic year. This award, which surpassed the Archdiocesan Educational Fund as the largest in school history, will provide additional funding for our welding program.
- Mr. Joe Williams, a highly-credentialed and well-respected commercial welding educator, joined our faculty as our new Welding Instructor in July. Our welding program was launched in September with 44 sophomores in the first phase of our CTE curriculum.
- Rev. James Greenfield, OSFS '79, President of DeSales University, and I signed a dual-enrollment agreement in August. This exciting partnership allows students at Father

Judge to receive college credit for such courses as Calculus, English Literature and Composition, Environmental Science, U.S. History and Physics. More than 100 students are currently taking advantage of this dual-enrollment program which further solidifies our robust academic offerings within our college-preparatory curriculum.

- Our Board commissioned a 10-Year Master Plan which will include a comprehensive analysis of our campus and facilities. The Master Plan will be completed in the 2019-2020 school year. I look forward to sharing updates on this important and exciting project.

“YEAR 1 OF OUR STRATEGIC PLAN WAS SUCCESSFULLY IMPLEMENTED IN THE 2018-19 SCHOOL YEAR...”

We are also off to a great start in Year 2 (2019–2020) of our Strategic Plan with the announcement of a \$1.5 million Redevelopment Assistance Capital Program (RACP) grant to The Friends of Father Judge. RACP is a Commonwealth of Pennsylvania grant program administered by the Office of the Budget for the acquisition and construction of regional economic, cultural, civic, recreational, and historical improvement projects. The \$1.5 million award will be used to assist in the creation and construction of a modernized Academic Excellence Center, as well as, state-of-the art CTE facilities.

While our school is strong, we are still faced with the serious challenge of meeting the great financial need of our students. The median household income of the population we serve in the Philadelphia region is approximately \$41,000. With a current tuition cost of \$9,000, the sacrifices our parents and guardians make to send their sons to Father Judge is tremendous. We want all families to be able to afford a Judge

education, so I have tasked our Development Office with three key initiatives to ensure the sustainability of our school, as well as, the affordability of a Catholic education for our current and future Crusaders. These initiatives are:

- Identify businesses and alumni who qualify for the Educational Improvement Tax Credit (EITC) Program in Pennsylvania. In the 2019-2020 school year, we are projected to be awarded nearly \$2 million in tax credit donations which will provide critical financial aid for our students. See page 14 for more information on how you can participate in EITC.
- Work with our current supporters in an effort to maximize the impact of their donation by determining if their employer participates in a matching gift program. Read more about how Rob Karalius '84 leverages his company's philanthropic culture to increase his support of Father Judge on page 8.
- Educate our alumni and donors on Planned Giving strategies. While we are grateful for the active generosity of our supporters, there are ways to make meaningful gifts to Father Judge which will leave a unique legacy during a donor's lifetime and beyond.

As promised, we are executing our plan, making bold decisions, and staying disciplined in our focus to educate the minds and souls of our students in the likeness of our patron St. Francis de Sales. We are committed to providing our young Crusaders with the tools they need to be successful in life beyond Solly Avenue. Our college-prep academic

“...EDUCATE THE MINDS AND SOULS OF OUR STUDENTS IN THE LIKENESS OF OUR PATRON ST. FRANCIS DE SALES.”

offerings and CTE curriculum provide our students with pathways to explore their passion and God-given talents while being encouraged to, in the words of St. Francis de Sales, “be who you are and be that well.” This purposeful ideology is embraced by our students, and it remains the guiding principle of everything we do.

I hope you will continue to support Father Judge and the important work we are doing to sustain and grow the “tradition of success” which has been the cornerstone of our school since we opened our doors 65 years ago. More importantly, I hope you will continue to financially support our efforts, share the Judge story in your social circles, and help advocate for more Crusaders to enroll at our great school. With strength in numbers, we will continue the celebrated legacy of Father Judge for the next six decades!

In Salesian Spirit and Crusader Pride,



Brian Patrick King '97, M.Ed.
President

P.S. I always enjoy hearing from our loyal alumni and friends so if you'd like to visit campus or share some ideas on how you can help support our mission, please contact me at bking@fatherjudge.com or 215-338-9494 x1103.



ADMINISTRATION

Brian Patrick King '97

President

Peter Chapla

Principal

Shane Dougherty '09

*Assistant Principal
for Student Affairs*

Timothy Dailey

*Assistant Principal for Student
Services, Dean of Students*

James Hozier

*Assistant Principal
for Academic Affairs*

Kathie Gibson

Tuition Officer

Ryan Kilkenny '97

Director of Admissions

Charles Huckel '66

Director of Development

Kevin Huckel '99

Director of Alumni Relations

Edward Mullen '77

*Director, Fr. Brisson Center
for Academic Excellence*

Robin Nolan

Director of the Annual Fund

Michele Purcell

Director of Guidance

Michelle Sachs

Director of Accounting

Jake Serfass

Director of Athletics

2019 HALL OF FAME INDUCTION

On May 8th, more than 350 alumni and friends gathered at the Vie Ballroom in Philadelphia to celebrate the 2019 Hall of Fame Induction and Dinner. Kevin Kilkenny '70 served as emcee for the evening which honored inductees William J. Burg '74 (recognized for success in Business and Industry), Joseph Carleone '63 (recognized for success in Pharmaceutical



and Aerospace Science), James P. Greene AWHs '70 (recognized for success in Education), Gerald D. Haffey '75 (recognized for success in Social Services and Entrepreneurship), Gerard Law '91 (recognized for success in Food Marketing Industry), Vincent J. Morrison, Esq. '69 (recognized for Law and Insurance), and BG John C. Woods, U.S.A. (Ret.) '71 (recognized for Military Service).



BASKETBALL GAME



PARTY AT THE PIER



SOCCER GAME



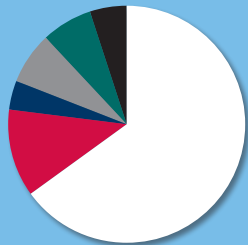
CRUSADER WEEKEND

The Crusaders invaded Wildwood during the first weekend in August. The annual Basketball Alumni and Soccer Alumni games were held on the morning of August 3rd and the Party at the Pier was held in the afternoon at Seaport Pier in North Wildwood. More than 1,000 Crusaders and Bambies gathered for the first all-class joint reunion since Rock at the Dock was held in 2011. The weekend concluded with a Mass on August 4th at Seaport Pier which was celebrated by Rev. Joseph Campellone, OSFS. It was a great weekend to be a Crusader. Stay tuned for information about Crusader Weekend in Wildwood in the summer of 2020!



CLASS OF 2019 184 GRADUATES

95% CONTINUING THEIR EDUCATION



- 65% attending 4 year universities and colleges
- 12% attending 2 year colleges
- 4% attending vocational or trade schools
- 7% enrolled in apprenticeship programs
- 7% joining the military
- 5% entering full time employment



3,128
HOURS OF SERVICE
DURING SENIOR YEAR

3.3 average
GPA



THE SALESIAN SEVEN

Our 2019 Salesian Seven – (standing) Michael Connell '19, Owen Ovecka '19, Benjamin Kopertowski '19, Matthew Bonner '19 and (kneeling) Alphonso Chie '19, Stephen Kodluk '19 and Matthew Beck '19 – were recognized during a school Mass celebrating the Feast Day of St. Francis de Sales in January. These young Crusaders were selected because they represent the seven Salesian virtues – respect yourself and others, recognize your talents, be patient, be gentle, be grateful, be positive and be confident. We are proud of these Salesian gentlemen who emulate the “be who you are and be that well” spirit of our patron St. Francis de Sales.

92%
PARTICIPATED
IN ACTIVITIES
AND
ATHLETICS



\$171,646

average amount of scholarships and grants awarded to a college bound Judge graduate

\$20.5+ million 453 SCHOLARSHIPS OR GRANTS

TOTAL SCHOLARSHIPS AND GRANTS AWARDED

84 DIFFERENT UNIVERSITIES, COLLEGES, OR FOUNDATIONS PROVIDED THE AWARDS



MODEL UN TRAVELS TO D.C.

Our Model UN Team attended the Washington Area Model United Nations Conference (WAMUNC) in March. WAMUNC, one of the premier high school Model United Nations conferences in the world, is a four-day exercise in diplomacy, international affairs, and global knowledge. Located just outside of Washington, D.C., WAMUNC is fully staffed and sponsored by The George Washington University.



ORIGINAL ARTWORK GIFTED TO FJ

Renowned artist Bro. Michael “Mickey” McGrath, OSFS '74 led our faculty and staff retreat in February. After the retreat, he presented one of his original pieces, “Light of the World,” to our President Brian Patrick King '97 as a gift to the school. We are so thankful to Brother Mickey for sharing his time and talent!

GRADUATION

FOR THE CLASS OF 2019

The 184 members of the Class of 2019, family, friends, faculty and administrators gathered in The Fox Gym to celebrate the 63rd commencement of Father Judge. Bishop John McIntyre presided over the ceremony which paid special tribute to the 50th Anniversary of the Class of 1969.



President Brian Patrick King '97, Bishop McIntyre and Rev. Jack Kolodziej, OSFS shared a moment at the conclusion of the ceremony.



Members of the Class of 1969 celebrated the 50th Anniversary of their graduation by wearing blue and red academic cords.



HONORS CONVOCATION

We were honored to have our Top 5 Seniors participate in the 40th Annual Archdiocesan Academic Honors Convocation at the Cathedral Basilica of Saints Peter and Paul in May. Our President, Brian Patrick King '97, our Principal,

Peter Chapla, and our Assistant Principal for Academic Affairs, James Hozier, joined our academic scholars Remy Garant '19, Matthew Beck '19, Matthew Purcell '19, Edison Felipe '19 and Shamus Ehersmann '19 at the Convocation.



THE RETURN OF THE JUDGE RELAYS

Hundreds of elite high school runners descended onto the Father Judge campus to participate in the Father Judge Coach Joe Valley Relays in April. We're grateful to everyone who worked tirelessly to revive this historic event and bring it back to all its glory on Solly Avenue!



Rob Karalius grew up at Cottman and Castor Avenues in Resurrection of Our Lord Parish. He is the son of George and Pat, and younger brother of Patty. His mother, Pat, was a stay-at-home mom and his sister Patty attended St. Basil Academy after finishing at Resso. His father, George, spent his entire career working for the City of Philadelphia and eventually became Deputy Commissioner of Parks and Recreation. It was through his father's Parks and Rec network that Rob was first introduced to the "Judge Guy" network. Long before Rob entered 3301 Solly Avenue as a freshman in 1980, he spent many years tagging along with dad to Rec Centers meeting Judge alums. "There was no other option for me," Rob recalled, "I always wanted to go to Judge."

After an emergency appendectomy freshman year ended his baseball career, Rob joined the Golf Team and was a member during his sophomore, junior and senior years. The team practiced at John F. Byrne

Golf Course and their matches were held at Torresdale-Frankford Country Club "where the rich people played." Rob enjoyed the Judge dances and rarely missed one. His love of dancing eventually landed him on the popular 1980's local TV show "Dancin' on Air." Rob says "the school stuff blazed by" but he has great memories and life-long friends from his time at Father Judge. When asked what he remembers most about being at Judge, he mentioned the doughnuts the ladies in the cafeteria made. Rob remembers, "even if you weren't hungry, once you smelled the doughnuts you HAD to have one!"

If not for an introduction by his classmate, Gino DiNofa, Rob's life would not be what it is today. After receiving a Business Logistics degree from Penn State in 1988, Rob quickly realized that there were no jobs in his field close to home. He decided to expand his job search to sales, and after an interview, he stopped by to see Gino at his restaurant on Frankford Avenue. Gino mentioned that his

cousin worked for New York Life and that the company was hiring. A few days later, Rob interviewed with a New York Life Managing Partner who told him "work for me and one day your name will be on the door." The rest is history: thirty-one years later, Rob is Managing Partner of his own New York Life office.

Rob credits his love of golf, as well as the camaraderie that was instilled in him at Father Judge, for much of his professional success. The combination of being a "Judge Guy" and playing golf has opened doors and new relationships. During the summer, Rob played in a golf tournament in Stone Harbor and was paired up with a few "Judge Guys." The common and unique bond of Father Judge turned strangers into fast friends. "It's amazing how Judge still adds great color to my life today," Rob remarked.

Since making his first gift to the Crusader Campaign in 1990, Rob has been a consistent and loyal donor. He believes that Father Judge has played an important role in his life and he feels motivated to pay it forward. "I've been blessed by so many Judge connections, so I want to give back," Rob said about his passion for supporting his alma mater. Rob believes that it's important for alumni to support the school to continue the legacy that was started 65 years ago. He looks at the many school closures and mergers in the Archdiocese of Philadelphia and it reinforces his commitment to Father Judge. He commented, "Judge has survived and we need to help it continue to thrive."

Rob's generous financial support of the Crusader Campaign is greatly leveraged by New York Life's giving program which matches 100% of his donations to Father Judge. Not only does New York Life match personal donations to non-profit groups, but it also contributes a dollar value for volunteer hours. Rob believes corporate giving programs are often overlooked and many alumni donors are leaving money on the table that could be directed to Father Judge. He encourages all "Judge Guys" to explore their company's giving program and suggests, "it might take very little effort to make a big impact."

DONOR SPOTLIGHT

ROB KARALIUS '84

"I'VE BEEN BLESSED BY SO MANY JUDGE CONNECTIONS, SO I WANT TO GIVE BACK... JUDGE HAS SURVIVED AND WE NEED TO HELP IT CONTINUE TO THRIVE."

CLASS CAPTAIN PROGRAM GET INVOLVED!

Launched in 2017, the Class Captain program works to improve communication with our alumni. Our goal is simple: ensure that a representative from each class serves as an intermediary between their classmates and the school. Class Captains provide updates on school news and events, class reunions and other items of interest to their class. Alumni can also provide updates and ideas to their Class Captain which will be shared with the school. If you want to get involved at Father Judge but your time is limited, the Class Captain program is for you! For more information, contact Kevin Huckel '99, Director of Alumni Relations, at khuckel@fatherjudge.com, or one of the Captains listed here.

1957
Joseph Simon
joseph.simon@verizon.net

1958
Jerry Scalley
jscalley7@aol.com

1959
Chris Uzelmeier
uzel106@consolidated.net

1960
Captain needed

1961
Captain needed

1962
Charles Boland
charlesboland@comcast.net

Dennis Morgan
dennis_morgan1944@yahoo.com

1963
Steve Kozakowski '63
kozvett@comcast.net

1964
Dan Cistone
daniel.cistone@verizon.net

1965
Gerald Bonino
gast151@comcast.net

John Devlin
devlingroup@msn.com

Francis McDonald
franirish@verizon.net

1966
Frederick Brodzinski
fbrodzinski@ccny.cuny.edu

Joseph Golden
bolabeg@aol.com

Charles Huckel
chuckel@fatherjudge.com

Frank LaForgia
la4shore@gmail.com

1967
Frank McAneny
fmcaneny@verizon.net

Edward Smith
esmithabw@yahoo.com

1968
Pat Cummings
pwcummings@hotmail.com

Michael Buck
mfbuck6096@comcast.net

1969
William Weaver
bweaverfj69@gmail.com

1970
Kevin Kilkenney
kkil3406@aol.com

1971
Captain needed

1972
Dennis McCrossen
dennismccrossen@gmail.com

1973
John Krakowiak
jkrakowiak@comcast.net

1974
Bill Burg
williamburg@comcast.net

1975
Pat McAneny
pmcaneny2@verizon.net

Leonard Garza
leo@e-premier.com

1976
Robert Montgomery
robantmegina@verizon.net

1977
Lawrence Brett
arizwriter@aol.com

1978
Captain needed

1979
James Boligitz
jimboligitz@comcast.net

1980
Chris Costello '80
cchris101u@gmail.com

1981
John Adamson
popadamson@icloud.com

1982
Captain needed

1983
Captain needed

1984
Captain needed

1985
Ernie Gallagher
eandksportswear@gmail.com

1986
Michael O'Grady
Mikeyo335@gmail.com

1987
Michael Huff
Mike.Huff@davita.com

1988
Mike Campellone
mcampellone@fatherjudge.com

1989
David Stauffenberg
dstauff72@yahoo.com

1990
Joseph Perri
primoperri@msn.com

Michael Smith
msmith3502@comcast.net

1991
Kevin Schultz
kevin@afcfitness.com

1992
Stephen Clark
schc276@verizon.net

1993
Rick Camillo
builderscorp.20@gmail.com

Peter Conicelli
ptc430@aol.com

1994
Mark Bennis
mbennis20@verizon.net

1995
Salvatore Merlino
samerlino@gmail.com

1996
Charles Mellon
officermellon@yahoo.com

1997
Brian King
bking@fatherjudge.com

1998
Captain needed

1999
Kevin Huckel
khuckel@fatherjudge.com

2000
Edward Pachell
edward@flyingbronco.io

2001
Patrick Hampson
patrickhampson52@yahoo.com

Steve Harrell
steve.j.harrell@gmail.com

2002
Ryan Nase
ryanase@gmail.com

2003
Matt Moka
Matt.Moka@spectaxp.com

2004
Matt Kocher
koch.mattj@gmail.com

2005
Brian Hampson
bhamp45@gmail.com

2006
Tim Dooley
timothydooley@gmail.com

2007
Douglas Ulrich
dwulrich22@gmail.com

Joe Grimes
jig5154@gmail.com

2008
Michael Prendergast
mprendergast1151@gmail.com

2009
Shane Dougherty
shanedoc78@yahoo.com

2010
Kevin Branigan
kbranigan13@gmail.com

2011
William Loughlin
wloughlin@fatherjudge.com

2012
Captain needed

2013
Matt Matwiejczyk
tweeze06@gmail.com

2014
Tom Bayer
tbayer@financialguide.com

Zach Elliott
zelliott@holyfamily.edu

2015
Joe Fitzgerald
tuf95510@temple.edu

Brendan O'Grady
brendanogrady@outlook.com

Greg Van Buskirk
gregvb@temple.edu

2016
Captain needed

2017
Captain needed

2018
Captain needed

2019
Captain needed

JIM SAVAGE
*Northeast Times
Wrestling Coach
of the Year*

493
TOTAL
STUDENT-ATHLETES
IN THE SCHOOL

ATHLETICS

HERE'S TO OUR CRUSADERS

34
STUDENT-ATHLETES
FROM THE CLASS OF 2019
WILL COMPETE IN COLLEGE
(DIVISIONS 1-3)

SHANE DOOLEY '19
*Northeast Times
Leadership Award*

**BRENDAN
MCCARTHY '20**
*Northeast Times
Soccer Player
of the Year*

LEN GIPSON '20
*Northeast Times
Baseball Player
of the Year*

66
ALL-CATHOLICS IN
ALL 17 PHILADELPHIA
CATHOLIC LEAGUE
SPORTS

WRESTLING
*Philadelphia
Catholic League
Champions & District
12 Champions*

EAMONN LOGUE '20
*Northeast Times
Wrestler of the Year*

84
MULTISPORT
ATHLETES

LIAM LOGUE '19
*Northeast Times
Scholar-Athlete*



THE MAGUIRE FOUNDATION: COMMITTED TO CATHOLIC EDUCATION

The Maguire Foundation, founded by James and Frances Maguire, provides generous support to high school students through the Maguire Scholars Program. More than 25 of our students were named Maguire Scholars in the 2018-19 school year which provided \$75,000 in tuition assistance. May God bless the Maguire Family for their continued support of Catholic education!

PRESIDENT'S CUP CHALLENGE

The 12th Annual President's Cup Challenge was held at the Union League Golf Club at Torresdale under a Crusader blue sky on October 8th. Thanks to the generosity of our alumni, friends and sponsors, more than \$120,000 was raised which was used to install high definition security cameras throughout our campus.



CTE PROGRAM RECEIVES \$350,000 IN GRANTS

In April we announced that we received a \$150,000 award from the Archdiocesan Educational Fund which was, at the time, the largest privately-funded grant in school history. That announcement was quickly followed up in July with more exciting news when we received a \$200,000 grant from the Connelly Foundation. Both awards – totaling \$350,000 - will provide funding for our new welding program within our Career & Technical Education (CTE) curriculum.

Our welding program is the first of its kind and will play a vital role in launching our CTE initiative which began in September. There are currently 44 sophomores enrolled in our welding program which is led by our new instructor, Mr. Joe Williams. We intend to implement additional course offerings in CTE over the next five years as part of our strategic plan including: Biotech, Business, Construction Trades, Culinary, Engineering, and Entrepreneurship. In addition, we are currently conducting a feasibility study to add Automotive and Aviation Technologies to the program by 2023. We are confident that the addition of CTE, along with our existing college preparatory academic offerings, will continue to make Father Judge a destination school for young men in Philadelphia and the surrounding counties.

THANK YOU TO OUR SALESIAN BROTHERS!

We are honored to have the continued support of the North Catholic Alumni Association and Norphans. During the 2018-19 school year, the Northeast Catholic Alumni Association provided \$30,000 and the Norphans provided \$5,000 in scholarships and grants to our young Crusaders. Thank you to the North Catholic Alumni Association and Norphans, our Salesian brothers, for their support of Catholic education!





THE SEAPORT SENIOR SCHOLARSHIP

Joe Byrne '93, owner of Seaport Pier in North Wildwood, joined our President, Brian Patrick King '97 in May to present \$5,000 scholarships to Dominic Corrado '20 and John Carroll '20. It was the inaugural presentation of the \$10,000 Seaport Senior Scholarship which will provide two Juniors with tuition assistance in their Senior year. We're grateful for the generosity of Joe and his partner, Dan Govberg, who are paying it forward to our young Crusaders!



2019 ALL CATHOLIC CHORUS

Tenors Dillon Parish '19 and Kevin Regan '19 represented Father Judge at the 2019 All Catholic Chorus Festival in February. The concert was held at Conwell Egan High School, and was conducted by Dr. Paul Head, Director of Choral Studies at the University of Delaware. Music performed at the show included "Ev'ry Time I Feel the Spirit," "Ave Verum Corpus," and "We Can Mend the Sky." Singers are chosen for the Chorus through an audition process held throughout the Philadelphia Archdiocese. Congratulations to our talented Crusaders!

CBN COMMITTEE

Tony Aponte '00
tony.aponte@ey.com

Pat Cummings '68
pwcummings@hotmail.com

Jim Emme '04
jemme@kpmg.com

Matt Gies '11
matt.gies@rentagrandson.org

Lou Guarrieri '71
ceo@cookebooks.com

Dan Kilcoyne '00
dan@minimelts.com

Kevin Kilkenny '70
kkil3406@aol.com

DJ Jones '97
toodlescreativemedia@gmail.com

Josh Link '02
link.josh@gmail.com

Bill Mandia '96
wmandia@stradley.com

Joe Reichert '01
joseph.m.reichert@gmail.com

CRUSADER BUSINESS NETWORK

What was once the Judge Business Alliance (JBA) is now the Crusader Business Network (CBN). Under the leadership of Committee Co-Chairs Bill Mandia '96 and Dan Kilcoyne '00, the Crusader Business Network was launched in November 2018. The goal of the CBN is to provide a platform for Judge Guys to network professionally. A Small Business Roundtable was held in October featuring Lou Guarrieri '71, Jeff Hanagan '10, DJ Jones '97 and Brian Tierney '78. Paul Zaengle '93 hosted a networking event at Capgemini (formerly LiquidHub) in April. We're looking forward to more CBN events in the coming year. If you'd like more information on the CBN, feel free to contact Kevin Huckel '99, Director of Alumni Relations, or one of the committee members.



The **12TH MAN CLUB** supports the football program at Father Judge. Below is a list of donors, as well as members. Annual membership fees are \$100 and include free access to all home football games and a 12th Man Club t-shirt. For more information on how to support the 12th Man Club, contact Ernie Gallagher '85 at ernestgallagher@comcast.net.

Contributions of \$10,000+
Bob Daniels '68

Contributions of \$1,000+
Tom Behr '79

Joe Ems
Casey Jones '92

Contributions of \$250+
Ed Bambino '82

Contributions of \$150+
Chris Fagan '88

Fred Kurz '68
Chalie Walker '88
Pat Waninger '82

Contributions of \$50+
Kevin Smink '79

2018-19 MEMBERS

Joe Ackler '66
Mark Bennis '94
Rich Bennis '70
Ed Bond '75
Kevin Bygott '00
Bill Carolan '72
Jim Casey '98
Bill Christian, Sr. '82
Bill Chistiansen '72
Tom Christy '65
Jim Clothier '83
Kevin Clothier '86
Mike Colligon '83
Pat Cummings '68

Maureen Curran
Steve Daino '76
Bob Daniels '68
Tracey Davis
Mike Dufner '70
Brian Dulin '85
Frank Dunn '65
Anthony Elentrio '86
Mike Elentrio '84
Mark Everitt '79
Charles Faillace
Michael Fallon '78
Dan Fricso '85
John Fry '63
Bill Gallagher '68

Greg Gallagher '82
Paul Gallagher '84
Anthony Gatti '64
John Gaynor '02
Bruce Glathorn '68
Mike Grant '70
John Guest '70
Bob Gwiazdowski '72
Mike Gwynn '82
Ken Haigh '71
Bernard Holst '83
James Jones '65
Joseph Kamnik '76
Matt Kaupp '75
Jim Kelly '81

Bill Koch '67
Fred Kurz '68
Alan Lehman '69
Gary Lehman '65
Tom Little '76
Cosmo Losco '80
Bob Maley '76
Jim Maloney '69
James McAteer '02
Frank McCardle, Sr. '69
Bob McCarthy '75
Francis McGlynn '78
Bill McKeever '71
Mike McKnight '06
Jim McShea '87

Joe Murphy
John Murray '02
Kevin Murray '92
Daniel Nicastro '88
Dennis Oates '70
Justin O'Brien '02
Michael O'Donnell '84
John Parsons '77
Paul Petrone '82
Matt Powers '88
Bob (Nate) Ramsey '70
Chris Roantree '99
Tom Rooney
Chuck Schretzman '84
Peter Shelinsky '76

Mark Singer '81
Paul Smyth '84
Tom Smyth '71
Bob Sommers '76
John Strobel '73
John Sullivan '79
John "Whitey" Sullivan '61
Patrick Taylor '05
Brian Tierney '78
Thomas Walsh '66
Kevin Waninger '75

** All those who made a contribution are also members.*



**ROOM DEDICATED
IN HONOR OF
TIM FEHRLE '68**

The Fehrle Crusader Room, established in honor of Tim Fehrle '68, was officially dedicated in May thanks to the generosity of Tim's friends and family. The Fehrle Crusader Room is located in our Mitchell Activity Center and will be used for coaches' meetings and other athletic conferences.



CRUSADERS VOLUNTEER TO GREET THE TOUR OF HONOR

Faculty members Shane Dougherty '09, Sean Tait '95 and Bill Loughlin '11, along with several of our students, proudly greeted the Bucks County Tour of Honor when it arrived at Parx Casino in April. The Tour of Honor included Vietnam Veterans who spent the day in Washington, D.C. and returned to Parx for a "Welcome Home" dinner. We are grateful to these men for their service as well as our Salesian Gentlemen who volunteered their time in memory of "Our 27".

TAX CREDITS = SCHOLARSHIPS

Pennsylvania made history in May of 2001 by becoming the first state to pass a corporate education tax credit. More than 18 years later, the Educational Improvement Tax Credit (EITC) continues to provide companies with a 75% tax credit for donations to a non-profit scholarship or educational improvement organization. The tax credit increases to 90% if the company commits to making the same donations for two consecutive years. Individuals who live in Pennsylvania and

have a personal tax liability of at least \$5,000 can also receive a tax credit via the Scholarship Limited Liability Corporation (LLC) established by BLOCS (Business Leaders Organized for Catholic Schools).

The corporate and individual tax credits enable us to provide critical tuition assistance to our most deserving students. More than \$500,000 in tax credit donations was received in the 2018-19 fiscal year which allowed us to help countless

families who desperately wanted the Father Judge experience for their son. By simply redirecting mandatory tax dollars, a business or individual can help provide a quality education for young men who otherwise would not be able to afford it.

If you want to make a tremendous impact on our students and their families, contact Robin Nolan, Director of the Annual Fund, at 215-338-9494 x1149 or rnolan@fatherjudge.com to learn more about the tax credit program.

DONOR TESTIMONIALS

"I've been happy to support Father Judge for many years. When I became aware of the tax credit program, I was excited about the idea of another way to help my alma mater. The program allows me to direct my tax dollars to something I care about instead of being absorbed by the state. I encourage all "Judge Guys" to explore the tax credit program which provides financial assistance to the students at Father Judge."

Al Altomari '77, Chairman & CEO, Agile Therapeutics, Inc.

"Our firm established PA Partners for Education because we are committed to giving back and helping out our area high schools. It's a tremendously cost effective way to give back to your high school because of the tax credits received for the donor. From my perspective, anyone with significant state taxes should use the EITC program to support Father Judge. It's the right thing to do and would reflect what a Judge guy should do. I encourage my fellow Crusaders to learn more about the programs and the opportunities to give back to Father Judge High School. Leaders lead!"

John Dugan '81, Retired PWC Partner

"Our company has participated in EITC since we found out about the program. It's a simple and no-brainer way to direct money that would otherwise go to the state to help the boys at Father Judge. We look forward to increasing our participation in the future and doing our part to help Judge Families in need."

Dan Kilcoyne '00, President, Mini Melts USA, Inc.



PARTNERSHIP WITH DESALES OFFERS COLLEGE CREDITS ON CAMPUS AT FATHER JUDGE

Our students can now complete college-level courses for DeSales University before they receive a high school diploma! Officials from both schools—including Rev. James Greenfield '79, OSFS, President of DeSales, and Brian Patrick King '97, President of Father Judge—and the Archdiocese of Philadelphia signed a dual enrollment agreement in July. Under the partnership agreement, our students can receive college credit for courses in Calculus, English Literature and Composition, Environmental Science, European History, U.S. History, Physics, and Probability and Statistics.

Rev. James Greenfield '79, OSFS, President of DeSales University, Sister Maureen Lawrence McDermott, I.H.M., Superintendent of Secondary Schools for the Archdiocese of Philadelphia, Brian Patrick King '97, President of Father Judge and Irene Hortsmann Hannan, Chief Executive Officer of Faith in the Future, gathered to sign the partnership agreement.

Members of the Board of Specified Jurisdiction and Directors of *The Friends of Father Judge High School Inc.*



Mark J. Adelsberger '80
Vice President of
Mortgage Operations
Firsttrust Bank



Joseph T. Ashdale '74
Business Manager
IUPAT District Council 21



Gregory J. Biles '94
Senior Manager
Grant Thornton LLP



Leo W. Dignam '77
Assistant Managing
Director
City of Philadelphia



**Rev. James J.
Greenfield, OSFS '79**
President
DeSales University



Louis Guarrieri Jr. '71
President (Retired)
Cooke Publishing Company



Robert J. Keyes '81
VP/GM (Retired)
Enterprise Holdings



Daniel P. Kilcoyne '00
President
Mini Melts USA, Inc.



Kevin J. Kilkenny '70
Independent Contractor
Amstar, LLC



William T. Mandia, Esq. '96
Partner
Stradley Ronon Stevens
& Young, LLP



James S. McCormick '84
First Vice President/
Family Wealth Director
Morgan Stanley



Stephen Pidhirsky '00
Director of Product
Management
USA Technologies



Thomas J. Quinn '96
Deputy CIO
FIS Group



Donald L. Salmon '72
President & CEO (Retired)
TBI Mortgage Company



Charles F. Seravalli Jr. '66
President
Seravalli Inc.

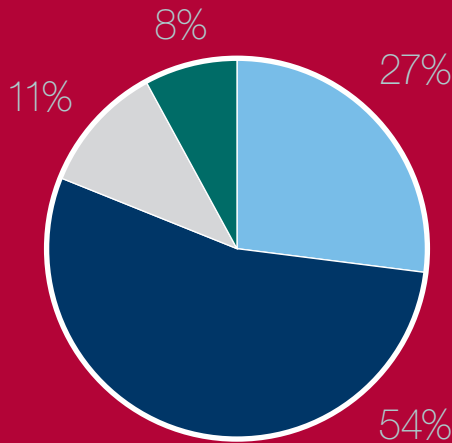


William P. St. Clair, CPA '75
(Chair)
Managing Shareholder
St. Clair CPA Solutions

ANNUAL REPORT OF GIVING

JULY 1, 2018 to JUNE 30, 2019

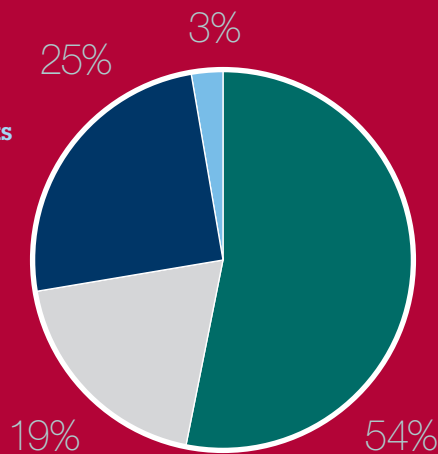
Results
by Category



FUNDRAISING RESULTS

Crusader Campaign	\$896,292
Tuition Assistance/Scholarships.....	\$1,778,314
Grants.....	\$350,000
Events.....	\$271,791
Total Amount	\$3,296,397

Disbursements
by Category



FINANCIAL DISTRIBUTIONS

Tuition Assistance/Scholarships.....	\$1,778,314
Campus Improvements	\$611,205
New Programs and Academic Offerings	\$807,997
Added to Endowment.....	\$98,881
Total Amount	\$3,296,297

CRUSADER CAMPAIGN

Father Thomas Judge Society	\$361,772
Father Louis Brisson Society.....	\$117,438
St. Francis de Sales Club	\$54,870
President's Club	\$135,056
Principal's Club	\$58,213
Crusader Club	\$133,638
Red & Blue Club.....	\$35,305

Total Amount **\$896,292**

TUITION ASSISTANCE & SCHOLARSHIPS

Scholarships/Grants	\$1,192,021
EITC/OSTC.....	\$572,633
Campellone Endowment	\$13,660

Total Amount **\$1,778,314**

EVENTS

A Taste of Northeast Philly.....	\$19,870
President's Challenge Cup.....	\$120,320
Huck-N-Duck Golf Classic	\$41,126
Hall of Fame Induction.....	\$90,475

Total Amount **\$271,791**

THANK YOU!

MOST FUNDS RAISED

\$226,062
CLASS OF 1963

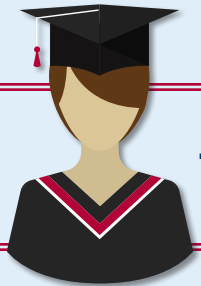
\$54,638
CLASS OF 1965

\$39,449
CLASS OF 1957

\$39,359
CLASS OF 1979

\$36,744
CLASS OF 1975

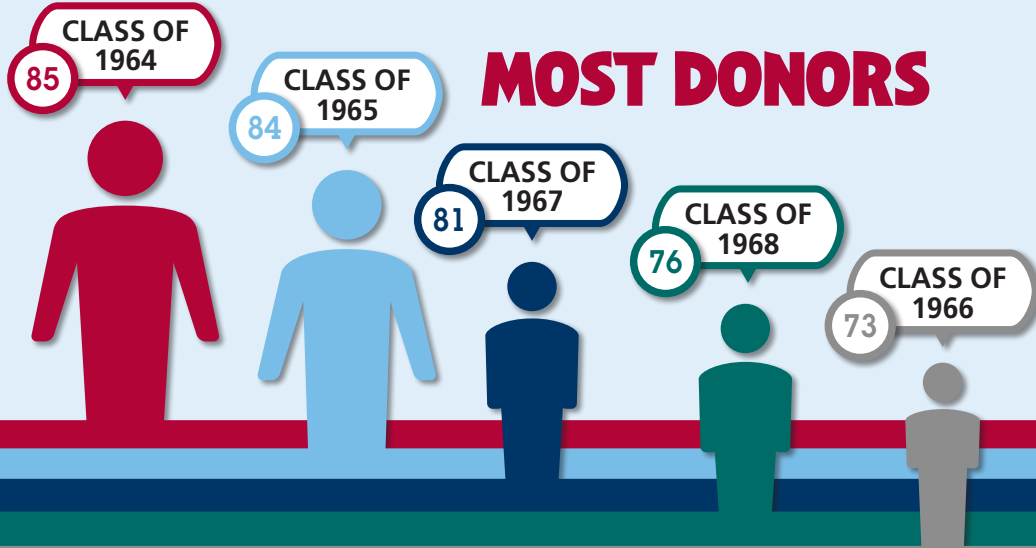
\$429.27



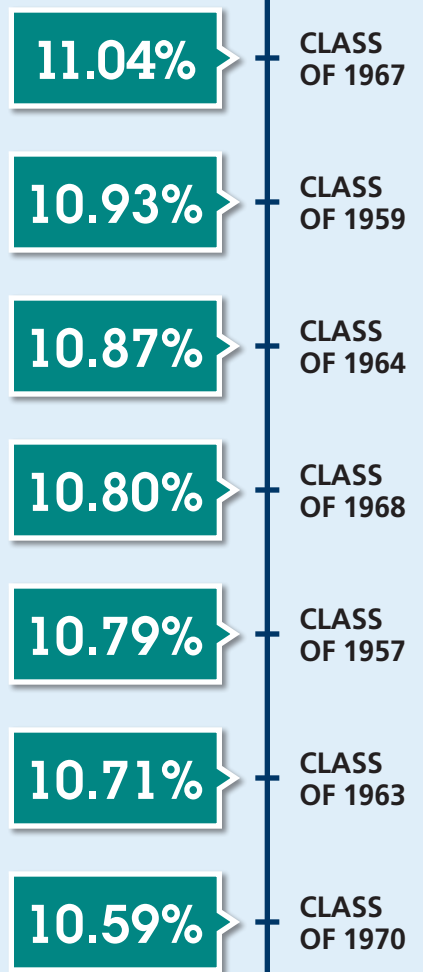
AVERAGE ALUMNI GIFT MADE TO FJ

HIGHEST AVERAGE GIFT

- 1 CLASS OF 1963
- 2 CLASS OF 1979
- 3 CLASS OF 1985
- 4 CLASS OF 1957
- 5 CLASS OF 1975



HIGHEST PARTICIPATION RATE



THE CRUSADER CAMPAIGN ANNUAL APPEAL

Father Judge High School has established named giving levels for the *Crusader Campaign*. This listing presents class years and the giving levels within each class year, followed by Friends and Businesses. The *Crusader Campaign* list continues with individual gifts *In Honor Of...* or, *In Memory Of...*

CLASS OF 1957

FATHER THOMAS JUDGE SOCIETY

Contributions of \$10,000+

Joseph
John Mitchell

FATHER LOUIS BRISSON SOCIETY

Contributions of \$5,000 - \$9,999

Lawrence Keeley
James McKee

ST. FRANCIS DE SALES CLUB

Contributions of \$2,500 - \$4,999

Paul MacHenry
James McShea

PRESIDENT'S CLUB

Contributions of \$1,000 - \$2,499

William Hindman
Joseph Krisciunas
Hugh Reid

PRINCIPAL'S CLUB

Contributions of \$500 - \$999

William Montgomery

CRUSADER CLUB

Contributions of \$100 - \$499

John Carroll
Joseph Curry
Ronald Debnam
Charles DiLuzio
Francis Dollarton
John Finnegan
Charles Garuffe
Thomas Haney
Edward Hughes
Robert Kelton
Thomas Klein
James Kuhn
Richard Ludwig
William MacIntyre
Charles McKeough
Francis McAdams
James Morrissy
Francis Mortimer
Francis Pfeiffer

Joseph Schwartz
Joseph Simon
Joseph Smyth
John Snyder
Joseph Steinhauer
Austin Zuerlein

RED & BLUE CLUB

Contributions of \$1 - \$99

Conrad Benetz
Andrew Benish
Francis Bradley
Edward Eggert
Edward Emery
Joseph Glatz
Frank Gorman
Jerome Lepping
John Pahutski
William Pinkstone
Joseph Richardson
Gerard Ryan
William Schmidt
John Scott
Richard Sender
Gerald Smith
John Smith
Peter Zenszer

CLASS OF 1958

PRESIDENT'S CLUB

Contributions of \$1,000 - \$2,499

Eugene Szamborski

CRUSADER CLUB

Contributions of \$100 - \$499

Joseph Beck
Raymond Citeroni
John DeAngelis
Christopher DiSciullo
George Dodelin
Edwin Fitzpatrick
Richard Hampel
Edward McCaney
Alexander McElroy
William Minich

Gerald Montgomery
William Moors
James Muldowney
Gerald O'Connell
Michael Regan
Richard Sambenedetto
Gerald Scalley
Gerald Schickling
Werner Schmidt
Francis Steiner
Joseph Wagner
Martin Watson

RED & BLUE CLUB

Contributions of \$1 - \$99

George Beisel
Gerald Dieckhaus
Robert Duckworth
Francis Flicker
Albert Gonce
John Graff
Joseph Graham
Victor Heckmanski
Herbert Johns
Thomas Lindemuth
Daniel McCartin
Thomas McManus
Francis McFetridge
Walter Pieczatkowski
William Scanlon
Robert Shipferling
George Steinbach
Leslie Turner

CLASS OF 1959

FATHER THOMAS JUDGE SOCIETY

Contributions of \$10,000+

Edward Hamill
William Mitchell

FATHER LOUIS BRISSON SOCIETY

Contributions of \$5,000 - \$9,999

Thomas Nowakowski

PRESIDENT'S CLUB

Contributions of \$1,000 - \$2,499

Hugh Walsh

PRINCIPAL'S CLUB

Contributions of \$500 - \$999

John Guiniven
James McGarvey

CRUSADER CLUB

Contributions of \$100 - \$499

Charles Beck
Benjamin Blaszcak
Daniel Campbell
Frank Carroll
James Creighton
Dennis Cribben
Francis Galante
Lawrence Gerrard
Richard Herron
Francis Hueber
Edward Kelleher
Joseph Kelly
John Lafferty
George Malloy
William McElhaugh
William McGarvey
Leo McInerney
Joseph McKernan
James McGinnis
John McGinnis
Michael McMenamin
Eugene Murphy
James Nulty
William O'Brien
Rev. John Oulds
Vincent Palagruto
Francis Pinnelli
Robert Selfridge
Richard Serfass
Richard VanderNeut
Matthew Wachowski
Paul Wisniewski

RED & BLUE CLUB

Contributions of \$1 - \$99

Paul Bonasch
Robert Brittingham
Byron Davidson
Richard Gheen
Thomas Gould
William Hepp
George Hohenleitner
Robert Kain
Matthew Korecki
James Lill
John McFadden
Martin O'Connor
Michael O'Rourke
Stanley Poll
Joseph Reilly
John Ricardi
Christopher Uzelmeier
William Vernon
Robert Worek
Kenneth Yanavage
James Yonchek
Joseph Zielenbach

CLASS OF 1960

ST. FRANCIS DE SALES CLUB

Contributions of \$2,500 - \$4,999

Gerald Manna

PRESIDENT'S CLUB

Contributions of \$1,000 - \$2,499

Timothy Cleary
Joseph Donnelly
John Ginley
Philip McKeaney
James McGrath
H. Robert Mehan

PRINCIPAL'S CLUB

Contributions of \$500 - \$999

Francis Curran
Peter Naccarato
John Polsenberg
Michael Sullivan

CRUSADER CLUB*Contributions of \$100 - \$499*

Thomas Chancler
 William Cleary
 John Curlett
 Robert Devlin
 Thomas Dolan
 Daniel Gallagher
 James Gaughan
 Bernard Hermley
 Patrick Hogan
 Louis Iatarola
 Matthew Iller
 Ted Kulesza
 Robert Loriaux
 James Mallon
 Robert McGonagle
 John McHale
 Rev. James McKeane
 Matthew O'Brien
 Robert Rafa
 Charles Renzi
 William Smith
 Robert Streit
 Frank Tiano
 Robert Vander Neut
 William Walker
 Gregory Weber
 Anthony Zanin

RED & BLUE CLUB*Contributions of \$1 - \$99*

Robert Bacher
 William Carroll
 Richard Ciotti
 William D'Arcy
 Robert Dillon
 James Doyle
 Edward Fossler
 Paul Hedgepeth
 John Jaskowiak
 Thomas King
 Joseph Lichtner
 James Loftus
 Walter Magnani
 Louis Maita
 John McDonough
 John Monachelli
 Ronald Neumer
 William O'Hara
 Joseph Reilly
 Edward Simms

CLASS OF 1961**PRESIDENT'S CLUB***Contributions of \$1,000 - \$2,499*

Stephen Lis
 Daniel Pradel

PRINCIPAL'S CLUB*Contributions of \$500 - \$999*

Edward Gallagher

CRUSADER CLUB*Contributions of \$100 - \$499*

Edward Amrein
 Robert Barsuglia
 William Boyle
 Philip DeLeo
 John Eldred
 Robert Farina
 Lawrence Friend
 Joseph Gerber
 Charles Graf
 Russell Houseal
 Gary Jermyn
 Gerald Kates
 Gerald Kelly
 Michael Kunz
 Robert Lewis
 Robert McCarthy
 John McMahan
 Thomas McShane
 Victor Michnowicz
 Richard Paschall
 Richard Rayca
 David Sejda
 Stephen Suwala

RED & BLUE CLUB*Contributions of \$1 - \$99*

Matthew Brennan
 John Cleary
 Richard Corkery
 Al DeCarlo
 David Decker
 Edward Devlin
 John Driscoll
 Edward Dymek
 Francis Ferriola
 William Haid
 Frank Haslam
 Richard Henofer
 Leonard Kaminski
 Thomas Kenney
 Edward Kent
 Hubert Mahon
 Ralph Maiolino

Robert Marsteller
 Louis Martine
 Joseph Mc Kenty
 William McCrudden
 James McKnight
 William McNulty
 Edward Moody
 John Mulholland
 Joseph O'Donnell
 Edward Rynkiewicz
 Raymond Schmidt
 Gerald Schoenherr
 Ronald Zabielski

CLASS OF 1962**PRESIDENT'S CLUB***Contributions of \$1,000 - \$2,499*

John Cleary
 Paul Meiklejohn
 Ralph Olson
 Raymond Tatko

PRINCIPAL'S CLUB*Contributions of \$500 - \$999*

Charles Calvanese
 Joseph Palm
 Stanley Pawlowski

CRUSADER CLUB*Contributions of \$100 - \$499*

Joseph Bagnell
 Michael Burns
 Joseph Conroy
 Seamus Daly
 Joseph Downs
 Robert Gerhardt
 Edward Kaminski
 William Keweshan
 Daniel Krajewski
 Al Kraus
 James Long
 Bernard Mack
 Philip McCabe
 Daniel Mehan
 Walter Meredith
 John O'Brien
 Bro. Lawrence Oelschlegel
 Michael Roche
 Stanley Schulgen
 James Searl
 Francis Smith
 James Toomes
 John Zaborowski

RED & BLUE CLUB*Contributions of \$1 - \$99*

Joseph Anderlonis
 Paul Barrus
 Leon Belancio
 Robert Bogle
 Charles Boland
 James Emory
 Michael Gray
 James Hamill
 George Lepping
 Joseph Long
 Robert Louis
 James Love
 Charles McCollum
 Joseph Pizzo
 John Roberts
 Francis Schreder
 Thomas Stein
 John Usonis
 Leonard Wiecezynski

CLASS OF 1963**FATHER THOMAS JUDGE SOCIETY***Contributions of \$10,000+*

Joseph Carleone
 William Sautter

FATHER LOUIS BRISSON SOCIETY*Contributions of \$5,000 - \$9,999*

John Geverd

PRESIDENT'S CLUB*Contributions of \$1,000 - \$2,499*

William Dunn
 Leonard Helbig
 John Lawler

PRINCIPAL'S CLUB*Contributions of \$500 - \$999*

Stephen Kozakowski
 Peter McCormick
 Richard Pozesky
 George Schweizer

CRUSADER CLUB*Contributions of \$100 - \$499*

William Baker
 Joseph Bond
 Eugene Daly
 Joseph Donahue
 Thomas Eldred
 John Fry
 John Gallagher
 James Goodbody
 Michael Gotwols
 Edward Hagan

John Kezlaw
 Robert Long
 Anthony Maher
 James McCartney
 Gerard McGinniss
 Michael McLoone
 Richard Olszanowski
 William Orth
 Edward Pellegrini
 Andrew Polovoy
 Francis Poole
 Robert Powell
 James Quinn
 Vincent Quinn
 John Reiber
 James Ryan
 Richard Smith
 Thomas Stretch
 Thomas Sullivan
 John Zilius

RED & BLUE CLUB*Contributions of \$1 - \$99*

Ronald Baranowski
 Anthony Bombas
 Thomas Christie
 Ronald Ciuffetelli
 Daniel Courtenay
 Gerald Gheen
 James Halpin
 Stephen Harlen
 Richard Krepol
 Stanley Laskowski
 Ronald Lyons
 Joseph Masterson
 John Mastil
 Eugene McAleer
 James McCauley
 Joseph McDonald
 Lawrence McGarvey
 Joseph Rooney
 Joseph Roth
 Joseph Saskiewicz
 Walter Whitehill

CLASS OF 1964**FATHER THOMAS JUDGE SOCIETY***Contributions of \$10,000+*

Daniel Gerner

FATHER LOUIS BRISSON SOCIETY*Contributions of \$5,000 - \$9,999*

Joseph McCaffrey

ST. FRANCIS DE SALES CLUB*Contributions of \$2,500 - \$4,999*

Daniel Cistone

PRESIDENT'S CLUB*Contributions of \$1,000 - \$2,499*

Joseph McAtee

PRINCIPAL'S CLUB*Contributions of \$500 - \$999*

John Borland

Kenneth Brownell

John Kaffenberg

John Loyden

William Sawyer

George Siegle

CRUSADER CLUB*Contributions of \$100 - \$499*

Walter Beard

Mark Bernhardt

William Ciliberti

Joseph Conway

Robert Cowden

James Crawford

Michael Dolan

Henry Fulmer

Anthony Gatti

Gerard Grady

James Hanratty

Richard Ingelido

George Luther

Thomas Malone

Bernard Maycheck

James McDonald

Joseph McMonagle

Richard Mellor

Dennis Monahan

James Phelan

Charles Potok

Frank Rooney

Gerald Rowan

J. Paul Seaman

Francis Sebold

Gerard Sonntag

David Spingler

John Steczynski

Edward Stopyra

William Streich

Thomas Tanner

Charles Ward

RED & BLUE CLUB*Contributions of \$1 - \$99*

John Black

Theodore Bukowski

Hugh Campbell

Leo Carmosky

Albert Danas

Robert Davis

Joseph Dennis

James Devlin

William Doyle

Francis Dufner

John Dzara

Joseph Eden

George Gillin

Darius Graziani

Miro Gutzmirtl

Leonard Hartman

John Hassett

Leonard Indelicato

Robert Koch

Dennis Kolodziejski

Paul Legacki

Edward Lehman

William Maguire

Frederick Maier

William McDonnell

John McGuigan

Thomas McVey

James O'Drain

John Peacher

Lawrence Philyaw

Joseph Polovoy

Andrew Ricketts

Paul Sabatino

John Shwed

Walter Slizofski

James Smith

John Tomescko

Peter Tripodi

John Truchel

William Valois

Edmund Ward

James Weeks

Robert Weinert

CLASS OF 1965**FATHER THOMAS JUDGE SOCIETY***Contributions of \$10,000+*

Richard Sasin

ST. FRANCIS DE SALES CLUB*Contributions of \$2,500 - \$4,999*

Kenneth Rudzinski

PRESIDENT'S CLUB*Contributions of \$1,000 - \$2,499*

George Diehl

Paul Gontarek

John Salwach

PRINCIPAL'S CLUB*Contributions of \$500 - \$999*

Thomas Serfassy

James Serfass

Robert Sigmund

CRUSADER CLUB*Contributions of \$100 - \$499*

James Altomari

Francis Bauer

Richard Budd

Anthony Casile

Gerald Christie

Thomas Christy

William Clark

Frank Cremen

John Crussard

John Delaney

Ronald Di Sabatino

Rev. Stanley Dombrowski

Joseph Dougherty

Frank Dunn

Thomas Fenerty

Charles Glinka

Michael Gorman

Russell Greway

Robert Jaskowiak

Francis Jastrzembksi

Joseph Knotwell

James Lannigan

Gary Lehman

Frank Leis

Frank Magee

Gary Manzi

Ronald Marple

John McCann

Dennis McCloskey

Joseph McDevitt

Francis McDonald

William McKenty

Joseph McMorro

Richard Mueller

Jan Ostrowski

William Reardon

Leon Rominiecki

Guy Sava

Francis Shields

William Steel

James Sullivan

Walter Teesdale

William Wiegand

RED & BLUE CLUB*Contributions of \$1 - \$99*

Michael Armstrong

Gerald Bonino

Robert Cianflone

John Clay

Michael Conway

Robert Dalton

William Davenport

Louis Dornbach

Dennis Doyle

Thomas Feaster

Michael Gennaro

Richard Gore

James Grugan

Donald Guy

James Jones

Frederick Kwiatkowski

Charles Lindsay

Timothy Madden

Michael Masny

Joseph McCurry

James McKenna

Joseph Mitchell

Edward Mockapetris

George Moore

William Murphy

Philip Muscarnero

Edward Sankowski

Francis Slavin

Michael Starsinic

Richard Tondo

Louis Volpe

Gregory Weiss

Joseph Woods

CLASS OF 1966**FATHER THOMAS JUDGE SOCIETY***Contributions of \$10,000+*

Charles Seravalli

FATHER LOUIS BRISSON SOCIETY*Contributions of \$5,000 - \$9,999*

William Lauderbach

Steven Marinucci

PRESIDENT'S CLUB*Contributions of \$1,000 - \$2,499*

Thomas Fenerty

Charles Huckel Sr.

Samuel King

William Morsell

PRINCIPAL'S CLUB*Contributions of \$500 - \$999*

Frederick Link

Michael Mackiewicz

CRUSADER CLUB*Contributions of \$100 - \$499*

Robert Alston

Eugene Andruczyk

Bernard Booth

Henry Bucci

Joseph Carrello

Edward Conn

Edward Costello

Joseph Costello

Francis Dylewski

John Flis

John Flood

Richard Galasso

John Gallagher

Richard Gatt

Joseph Glica

Louis Heim

Eugene Kelly

Edward Kozakowski

Frank LaForgia

Joseph Laskowski

Matthew Lewandowski

Thomas Lynch

Patrick Lyons

Robert Magdziak

James McGinley

Patrick Mullin

Daniel Murphy

Robert Mursch

Patrick O'Neill

John Rafa

Bernard Rayca

J. Michael Schell

Clement Smink

Thomas Walsh

Andrew Wisniewski

RED & BLUE CLUB*Contributions of \$1 - \$99*

William Binnig

Joseph Brennan

Frederick Brodzinski

Edward Cabott

Charles Cunningham

Robert Davenport

Michael Dooner

Francis Elliott

William Foley

Allen Gerard

Joseph Golden

William Green

William Hartzell

Edward Hueber

William Jesberger
Patrick Keaveney
Edward Krystopowicz
Robert Lakata
Raymond Lambert
Walter Makowski
Paul Miller
Edward Pewdo
Frank Reis
Robert Resh
John Riley
Joseph Ryan
Richard Smith
John Stengel
Justin Sweeney
Edward Thomas
Ronald Vitale
Joseph Wierzbicki

CLASS OF 1967

FATHER THOMAS JUDGE SOCIETY

Contributions of \$10,000+

James Lynch

Thomas Teesdale

PRESIDENT'S CLUB

Contributions of \$1,000 - \$2,499

Dennis Campbell

PRINCIPAL'S CLUB

Contributions of \$500 - \$999

Robert Kruczuk

Thomas Puzycki

William Siegle

Christopher Zearfoss

CRUSADER CLUB

Contributions of \$100 - \$499

Joseph Altimari

Michael Barone

Thomas Bielecki

David Clarke

Richard Coller

Thomas Craig

Victor Dascenzo

John Dougherty

Daniel Dufner

Michael Ebner

James FencI

Thomas Galie

John Grabowski

Michael Greway

Joseph Hinnegan

Robert Johnston

Norman Kraft

Eugene Loftus

Francis Marczak
Joseph McGrath
Michael McKeon
Charles Miller
Richard Mizia
William Murphy
Andrew Pakstis
John Sciblo
Stephen Sierocinski
Thomas Wesner

RED & BLUE CLUB

Contributions of \$1 - \$99

John Altomari

Clayton Belcher

Dennis Bonner

Joseph Boyle

Michael Bralczyk

Richard Breeser

Albert Bucci

Robert Burt

James Carpitella

Robert Connelly

Gerald Crane

Michael Dell'Aquila

James DeStefano

James Dolan

William Duaime

William Durso

John Fox

Stephen Garry

Robert Gibbon

William Hagan

Richard Haselbarth

Robert Hutchinson

Gerald Kenny

Joseph Laukaitis

John Maguire

John Maher

Raymond Mahon

Lee Maurer

Ronald McDonnell

Richard Micklos

Joseph Newell

James O'Neill

Michael Roakes

Daniel Sattele

Lawrence Shubert

Edward Smith

Charles Stevenson

Joseph Tomaselli

William Trinkle

Francis Tryon

James Unger

Charles Webster
John Wiest
Frederick Wise
Michael Wyshywaniuk
James Yizzi

CLASS OF 1968

FATHER THOMAS JUDGE SOCIETY

Contributions of \$10,000+

James Anderson

John Briggs

FATHER LOUIS BRISSON SOCIETY

Contributions of \$5,000 - \$9,999

Robert O'Hara

ST. FRANCIS DE SALES CLUB

Contributions of \$2,500 - \$4,999

Patrick Cummings

Dennis Johnson

PRESIDENT'S CLUB

Contributions of \$1,000 - \$2,499

Robert Daniels

John McGinty

PRINCIPAL'S CLUB

Contributions of \$500 - \$999

James Burgmann

Daniel Coonan

Gerard Donnelly

Stanley Gladkowski

Donald Klawiter

CRUSADER CLUB

Contributions of \$100 - \$499

Albert Bichner

Stephen Bond

Francis Brennan

Richard Brown

Raymond Buber

Rev. Thomas Buckley

Richard Carr

Michael Caruso

Rev. Angelo Citino

Michael Conway

Leonard DeFinis

Richard Demberger

Robert Duaime

J. Michael Egan

Richard Farina

Bruce Glatthorn

Francis Gohl

Robert Hector

Kenneth Hesser

Edward Kane

Michael Krawczyk

Frederick Kurz

Gregory Labacz
Nicholas LaForgia
Matthew Liberatore
Thomas Loughrey
Richard Mattia
Charles McGee
Benedict McGinnis
George Miller
Gerald Newell
John Norris
James Ritvasky
John Shanley
Edward Sutor
Gerald Vigna
Paul Waldowski
Joseph Whalen

RED & BLUE CLUB

Contributions of \$1 - \$99

Francis Barthmaier

Martin Brill

Theodore Colella

Sean Corcoran

John Crawford

David Curry

Dennis Devine

Thomas Donahue

Anthony Farano

Joseph Fitzpatrick

Leonard Gadzinski

William Gallagher

Thomas Germscheid

John Gullman

John Kilty

Richard Kirk

Richard Lewandowski

Joseph Lutes

Thomas McGovern

Matthew Moskal

John O'Rourke

Andrew Pchola

Stephen Piasecki

Thomas Rogalski

Dennis Serbin

William Seybold

Daniel Sullivan

Paul Sweeney

Thomas Sylvester

CLASS OF 1969

FATHER THOMAS JUDGE SOCIETY

Contributions of \$10,000+

Vincent Lowry

ST. FRANCIS DE SALES CLUB

Contributions of \$2,500 - \$4,999

Stephen Reustle

PRESIDENT'S CLUB

Contributions of \$1,000 - \$2,499

James Maloney

PRINCIPAL'S CLUB

Contributions of \$500 - \$999

Thomas Kealey

Thomas McGinley

Thomas Pippet

CRUSADER CLUB

Contributions of \$100 - \$499

John Adamski

Michael Amoroso

John Angermeier

James Boyce

Edward Bucci

Joseph D'Ascenzo

Michael De Meo

Michael Devlin

John Garvin

Edward Grochowski

Anthony Gryczka

Dennis Jobba

Paul Karis

Rev. Edward Kearns

George Kneib

Alan Lehman

John Mangeney

Joseph McFadden

Michael McPeake

Frank Mikulski

Thomas Murphy

Francis Nulty

Michael O'Connor

Joseph Schramm

David Slowik

Robert Soda

Brian Ward

William Wiegman

RED & BLUE CLUB

Contributions of \$1 - \$99

Karl Autenrieth

Gilbert Blinebury

Stanley Brzyski

Arnold DiBlasi

Joseph Domanico

Thomas Gerard

William Holt

Vincent Morrison

John Neill

Nicholas Pomponio

James Ream
Anthony Saltarelli
Carl Schmied
Kevin Smith
Michael Sullivan

CLASS OF 1970

FATHER LOUIS BRISSON SOCIETY

Contributions of \$5,000 - \$9,999

Michael Hammond
H. Richard Haverstick
Kevin Kilkenny

ST. FRANCIS DE SALES CLUB

Contributions of \$2,500 - \$4,999

William Schafer

PRESIDENT'S CLUB

Contributions of \$1,000 - \$2,499

Robert Crossin
Thomas McGowan
Thomas Moore
John Sullivan

PRINCIPAL'S CLUB

Contributions of \$500 - \$999

Richard Bennis
Michael Rowley

CRUSADER CLUB

Contributions of \$100 - \$499

David Andrzejewski
Michael Beatrice
James Bock
William Ciabattini
John Cochrane
Robert Coleman
Carmen Conicelli
William D'Emilio
James Donnelly
Terrence Dougherty
Dennis Doyle
George Dubyak
James Fagan
Joseph Gallagher
Daniel Gatti
Michael Grant
John Guest
Theodore Hufnal
R. Gary Kemery
William Kennedy
Robert Kissell
John Kneib
James Krimm
John Lacey
George McGonagle
William McKinney

Timothy Moore
James O'Brien
Stephen Overline
Salvatore Palantino
Francis Plunkett
Robert Ramsey
George Rapp
Thomas Vokes
James Williamson
Michael Woods

RED & BLUE CLUB

Contributions of \$1 - \$99

Edward Albert
John Barbieri
Joseph Galzerano
Andrew Gavin
Michael Geary
John Hazlett
Michael Kozak
Ralph Labolito
William Lane
Thomas Lazor
Michael Massimiani
Michael McAnally
William McLaughlin
Thomas Mee
Dennis Oates
Albert Palumbo
Joseph Sanchack
Thomas Senior
Paul Slaboda
Mark Szymanski
Thomas Teitman

CLASS OF 1971

FATHER LOUIS BRISSON SOCIETY

Contributions of \$5,000 - \$9,999

Louis Guarrieri
Robert Knauss

PRESIDENT'S CLUB

Contributions of \$1,000 - \$2,499

Laurence Drabyak
Edward Gulba
Kevin Malloy
Kenneth Schafer
Thomas Smyth

PRINCIPAL'S CLUB

Contributions of \$500 - \$999

Bernard McCullagh
John McDewitt

CRUSADER CLUB

Contributions of \$100 - \$499

William Behm

Dennis Budd
James Carty
John D'Ascenzo
Albert Delia
Patrick Dugan
Thomas Dumas
Matthew Fanning
Rev. Timothy Judge
John Kearns
Joseph Kelly
James Lynn
John Maggioncalda
John Mahan
Francis McKelvey
Francis Murphy
Bernard Murray
Thomas Nicholas
James O'Malley
Michael Pilla
Anthony Porrazzo
Robert Refice
John Robbins
Michael Scherneck
William Schmid
Robert Smith
Joseph Smith
Michael Smith
Martin Walsh

RED & BLUE CLUB

Contributions of \$1 - \$99

William Beal
Ernest Bocolo
Charles Cutter
Anthony Del Colombo
James Farrell
Joseph Gazzara
Stephen George
Raymond Heine
Timothy Hipple
John Hoog
William Keane
Bernard McLaughlin
William Morris
Kevin Murray
Robert Nuzzolillo
Anthony Scavozzi
William Smith
Joseph Sweeney

CLASS OF 1972

FATHER THOMAS JUDGE SOCIETY

Contributions of \$10,000+

Donald Salmon

PRESIDENT'S CLUB

Contributions of \$1,000 - \$2,499

Robert Gwiazdowski

PRINCIPAL'S CLUB

Contributions of \$500 - \$999

Jude Fanning
Edward Pokrywka

CRUSADER CLUB

Contributions of \$100 - \$499

John Adelsberger
Dennis Balonis
William Carolan
William Cassidy
William Christiansen
Brad Christy
Matthew Cronin
Joseph Elsesser
Richard Fetters
John Gallagher
James Gore
Hugh Hamill
James Haviland
Daniel Healy
Gary Ingersoll
Joseph Kearns
Michael Kozole
Charles Liddell
James McAnulty
Dennis McCrossen
Matthew McDonald
Neil McGilloway
Daniel McKenna
Joseph Morrison
Michael Myers
Edward Osiecki
Joseph Reinhart
Raymond Tarnowski
James Tomlinson
Thomas Townsend
Louis Viscontio

RED & BLUE CLUB

Contributions of \$1 - \$99

Lawrence Beddis
Walter Brzyski
Robert Cimorelli
John Collier
John Coombs
Francis Costello
Brian Delgross
James Eckles
Thomas Gegeckas
Anthony Hagan
Richard Jackson

James Knotwell
Alfred Mardt
Anthony Mattia
James McCaffrey
Gregory McDonald
Eugene McFadden
Gerald Schlechter
James Smith
Thomas Szkaradnik
Michael Taylor

CLASS OF 1973

FATHER LOUIS BRISSON SOCIETY

Contributions of \$5,000 - \$9,999

John Krol

PRESIDENT'S CLUB

Contributions of \$1,000 - \$2,499

Terence Delaney

PRINCIPAL'S CLUB

Contributions of \$500 - \$999

Daniel Egan

John Fleming
Edward Lloyd
Joseph Nadolski
Peter Sandusky

CRUSADER CLUB

Contributions of \$100 - \$499

Gerard Boone
Rev. William Chiriaco
Thomas Donnelly
Joseph Dougherty
John Foley
James Glessner
Kevin Huckel
Michael Le Dent
Francis Lomis
Michael Manieri
John Mc Henry
John Mc Shea
J.P. Gary McCaffery
John McFadden
Edward Nissley
Ronald Pawlak
James Scache
Daniel Schanz
Rev. Barry Strong, OSFS
James Sutliff
Michael Venditti
Stephen Wagner
Joseph Walls
Mark Ward
Richard Wismer

RED & BLUE CLUB*Contributions of \$1 - \$99*

Michael Baker
James Colahan
Joseph Della Penna
Gerald Ellis
Joseph Gindele
Raymond Greway
George Holland
John Horcher
William Johnston
Denis Jones
Edward Jurkiewicz
Ronald Kennedy
George Mathes
Thomas Mc Loughlin
John McCullough
Edward O'Hanlon
Robert Presser
Gerard Senske
Dennis Stanzione
John Strobel
Michael Stutz
George Thomas
Anthony Toczyłowski
Michael Werner
Michael Ziegler

CLASS OF 1974**FATHER LOUIS BRISSON SOCIETY***Contributions of \$5,000 - \$9,999*

Michael Adams
Joseph Ashdale
James Brennan
William Burg

ST. FRANCIS DE SALES CLUB*Contributions of \$2,500 - \$4,999*

Wallace Nowicke

PRESIDENT'S CLUB*Contributions of \$1,000 - \$2,499*

John Scanlon

PRINCIPAL'S CLUB*Contributions of \$500 - \$999*

Anthony Cavalier
Anthony Greco
Raymond Heineman
Thaddeus Konicki

CRUSADER CLUB*Contributions of \$100 - \$499*

Carl Altilia
Ted Babiasz
Francis Bell
Edward Brady

Thomas Braun

Edward Cieri
Anthony Cistone
Timothy Dudek
Thomas Fair
John Fitzpatrick
Stephen Guarrieri
Albert Jaskel
John King
Robert Krouchick
William Matysik
James McCarthy
Bro. Michael L. McGrath
Anthony Monaco
Rev. Robert Mulligan
Michael Newell
Joseph Peyton
Michael Pultro
Kevin Quaintance
William Quinn
James Redican
Daniel Schuster
Robert Smith
Donald Smullen
Joseph Verdi
Robert Verrelle
Thomas Warren

RED & BLUE CLUB*Contributions of \$1 - \$99*

Michael Beukers
Thomas Borda
John Boyle
Glenn Dalton
Edward Donahue
R. David Homsher
Thomas Lloyd
Martin McCarthy
Michael McMahan
John Misina
Daniel Moore
Joseph Morace
Alfred Morrone
Robert Muldoon
Kevin Reilly
Daniel Williams
Edward Witkowski

CLASS OF 1975**FATHER THOMAS JUDGE SOCIETY***Contributions of \$10,000+*

John Carroll

FATHER LOUIS BRISSON SOCIETY*Contributions of \$5,000 - \$9,999*

John McDonald
Joseph Muffler
William St. Clair

ST. FRANCIS DE SALES CLUB*Contributions of \$2,500 - \$4,999*

John Bonner
Thomas Dobbins
Paul Gallagher

PRESIDENT'S CLUB*Contributions of \$1,000 - \$2,499*

Peter DeAngelis

PRINCIPAL'S CLUB*Contributions of \$500 - \$999*

Louis Battagliese
Thomas Dearing
Brian Hannah

CRUSADER CLUB*Contributions of \$100 - \$499*

John Bolger
Daniel Brennan
Anthony Catanzaro
Albert Di Felice
Francis Hennessey
Michael Hudek
Vincent Hughes
Robert LePera
Stanley Maminski
Robert McCarthy
E. Kevin McCauley
Nicholas Patras
Joseph Petragnani
Richard Ponticello
Joseph Pounder
Kenneth Sheppard
Michael Smith
Dennis Taylor
Francis Thorpe

RED & BLUE CLUB*Contributions of \$1 - \$99*

Edward Bond
Joseph Campagna
John Capecci
Richard D'Arcangelo
Joseph Duva
Daniel Gaffney
Leonard Garza
James George
Hugh Keough
George Klinger
Thomas Kneib
Michael Kolodziej

Gerard Mc Hale

John Milligan
William O'Brien
Jerome O'Brien
Daniel O'Connor
Thomas Odyniec
Edward O'Malley
Stephen Roedell
Joseph Sevick
Robert Sweeney
Adam Ungaro
Martin Ward
Robert Zanneo

CLASS OF 1976**FATHER THOMAS JUDGE SOCIETY***Contributions of \$10,000+*

Charles Murray

PRESIDENT'S CLUB*Contributions of \$1,000 - \$2,499*

Charles Machion

PRINCIPAL'S CLUB*Contributions of \$500 - \$999*

John Minnich

Robert Sommers

CRUSADER CLUB*Contributions of \$100 - \$499*

Michael Agnew
Joseph Arcidiacono
Gerald Baioni
Christopher Cocci
James Corbley
William Eickhoff
John Faford
Francis Fitzpatrick
Michael Hall
Joseph Kamnik
Francis Maxwell
Gerald McCaffrey
Kevin McLaughlin
Dale Michalak
Robert Montgomery
John Nucero
Donald O'Grady
Michael Patterson
Daniel Reustle
John Santoro
John Schrader
Joseph Solimeo
Robert Townsend
Robert Walls

RED & BLUE CLUB*Contributions of \$1 - \$99*

Charles Ball
Joseph Blair
John Campbell
James Coughlan
Stephen D'Arcangelo
Steven Di Giovanni
Patrick Donnelly
Joe Fedeli
Richard Fitzpatrick
Christopher Gasiorek
Mitchel Given
Robert Hickey
Richard Kane
Salvatore Marzulli
Vincenzo Passaro
John Proietta
John Schiffler
Timothy Tague
John Van Note
Thomas Wismer

CLASS OF 1977**FATHER THOMAS JUDGE SOCIETY***Contributions of \$10,000+*

Alfred Altomari

FATHER LOUIS BRISSON SOCIETY*Contributions of \$5,000 - \$9,999*

Leo Dignam

PRESIDENT'S CLUB*Contributions of \$1,000 - \$2,499*

Francis McGarvey

PRINCIPAL'S CLUB*Contributions of \$500 - \$999*

Joseph Arcangelo
Christopher Bock
Joseph Cammarota
Michael Maio
George Pinel

CRUSADER CLUB*Contributions of \$100 - \$499*

Robert Armstrong
Scott Balara
Michael Boyle
Joseph Camm
Frank Ciurlino
Michael Cochrane
James Craigie
Harry Crane
Rev. John Fisher
Thomas Greenfield
Ralph Guarrieri

Michael Guglielmo
Michael Hughes
Joseph Johnson
John Kain
John Karustis
Michael Kiska
Thomas Kowalski
David Maimone
Denis McBride
Christopher Riley
Robert Sawyer
Jules Senske
Timothy Shortall
Joseph Suter
Richard Sutliff
Julius Zaccone

RED & BLUE CLUB

Contributions of \$1 - \$99

Francis Agrusa
Henry Conicelli
Michael Donahue
Thomas Gavaghan
Edward Helmich
Charles Keegan
Sean McGrath
Michael McKenna
Michael Mueller
David Murawski
David Robbins
Robert Starrs
Matthew Toth
Peter Tucci

CLASS OF 1978

PRESIDENT'S CLUB

Contributions of \$1,000 - \$2,499

Robert Bankhead
Joseph Cugine

PRINCIPAL'S CLUB

Contributions of \$500 - \$999

Michael Fallon
Michael Lanciotti

CRUSADER CLUB

Contributions of \$100 - \$499

Lawrence Brzycki
Chris Ciabattone
James Confair
Roy Crouch
Thomas Duffy
James Jobba
Jeffrey Long
James Marr
Edward Massara

Francis McGlynn
David McGowan
David McGrath
Joseph O'Brien
Raymond O'Rourke
Martin Overline
Michael Riley
Adam Rucci
Albert Rucci
Thomas Schickling
Vincent Schneider
William Searl
Perry Stanger
William Torpey
Thomas Vinciguerra
John Wolstenholme

RED & BLUE CLUB

Contributions of \$1 - \$99

Edward Aitken
Anthony Baker
Robert Boyle
John Connelly
Patrick Flanagan
Thomas Garrison
Lawrence Gould
John Joscelyne
Thomas Kelly
Cornelius Madden
Charles McBrearty
Joseph McKay
Francis Staab
John Stelmaski
Robert Strouse
Joseph Swety
Guy Trost

CLASS OF 1979

FATHER THOMAS JUDGE SOCIETY

Contributions of \$10,000+

Michael McCloskey
Stanley Musial

ST. FRANCIS DE SALES CLUB

Contributions of \$2,500 - \$4,999

Donald Runowski

PRESIDENT'S CLUB

Contributions of \$1,000 - \$2,499

Thomas Behr
Thomas Marcinek
Joseph Martz

PRINCIPAL'S CLUB

Contributions of \$500 - \$999

William Carr
Rev. James Greenfield

Michael McIntyre
Thomas Smith

CRUSADER CLUB

Contributions of \$100 - \$499

Mark Behrle
Francis Brill
Carl Coleman
Donald Crist
Gerald Evans
Dennis Harte
Edward Hinchey
Joseph Lerro
Matthew Madden
James McHale
Joseph Montgomery
Joseph Nangle
Thomas Pacek
John Sullivan
Robert Sutliff
Michael Terwilliger
Joseph Tomasetti

RED & BLUE CLUB

Contributions of \$1 - \$99

Harry Beam
James Boligitz
Steven Bollendorf
John Broskey
David Gallo
Michael Juszak
John Keen
Gregory McGuinness
Kevin McManus
William O'Brien
Kevin O'Connor
Ralph Pietro
Charles Schneider
James Schule
Frederick Sicilia
Robert Siegel
Stephen Turnbull

CLASS OF 1980

FATHER LOUIS BRISSON SOCIETY

Contributions of \$5,000 - \$9,999

Mark Adelsberger
Brian Hanstein

PRESIDENT'S CLUB

Contributions of \$1,000 - \$2,499

Anonymous
Thomas Beck
Michael Nocitra

PRINCIPAL'S CLUB

Contributions of \$500 - \$999

James Hart
William Krothhoff

CRUSADER CLUB

Contributions of \$100 - \$499

Thomas Boetefuer
Francis Campellone
Lawrence Davis
Arthur Dettra
Gerard Duffey
David Faraldo
Cosmo Losco
Bernard Martin
Edward McDevitt
Francis McGee
Gerald Mullin
Edward O'Neil
Keith Sabara
James Sauermelch
John Tague
Martin Whalen
James Wixed

RED & BLUE CLUB

Contributions of \$1 - \$99

Jerome Azarewicz
William Brophy
Thomas Broskey
Christopher Costello
Francis Del Colombo
Michael Dolan
William Dulin
Thomas Hazlett
Michael Hughes
Edward Kelly
Michael Long
Patrick Milligan
John Robinson
Alan Schneiderreit
Daniel Zuccari

CLASS OF 1981

FATHER THOMAS JUDGE SOCIETY

Contributions of \$10,000+

Francis Seravalli

FATHER LOUIS BRISSON SOCIETY

Contributions of \$5,000 - \$9,999

Louis Busico
John Dugan
Daniel Fitzpatrick
Robert Keyes

PRESIDENT'S CLUB

Contributions of \$1,000 - \$2,499

John Frain

PRINCIPAL'S CLUB

Contributions of \$500 - \$999

Brian Corcoran
James Farrell
John Garland
Daniel Gormley
Michael Tobin

CRUSADER CLUB

Contributions of \$100 - \$499

Dennis Boone
Robert Boyle
Kevin Bradley
James Brighter
Anthony Catalano
Paul Costello
Dennis Davis
James Dougherty
Patrick Flicker
Hugh Gallagher
Gerald Grunewald
Thomas Hutchinson
James Kelly
Thomas Marlow
William Minich
Thomas Nadolski
Rocco Nicoletti
Gerard Scannell
Victor Stott

RED & BLUE CLUB

Contributions of \$1 - \$99

James Delaney
Michael Elliott
Brian McDonald

CLASS OF 1982

PRESIDENT'S CLUB

Contributions of \$1,000 - \$2,499

Edward Bambino
William Eckerle

PRINCIPAL'S CLUB

Contributions of \$500 - \$999

Francis Murray
Michael Singer
James Tobin

CRUSADER CLUB

Contributions of \$100 - \$499

James Beaumont
Joseph Benedetto
Thomas Crane
William Eckerle

Albert Gallo
Ronald Hulmes
Gerard Kane
Daniel Lutz
Edward Peters
Dennis Riley
Kevin Troy
Joseph Wojnar

RED & BLUE CLUB

Contributions of \$1 - \$99

Andrew Assenmacher
Joseph Campbell
Craig Canning
Robert Capaldi
John Fox
George Gallen
Kenneth Graham
Timothy Henry
Christopher Labovitz
Paul Lombardo
Robert Miller
Mark Palma
Joseph Quinto
John Robb
Richard Russo
Walter Shappell

CLASS OF 1983

ST. FRANCIS DE SALES CLUB

Contributions of \$2,500 - \$4,999

Theodore Aicher

PRESIDENT'S CLUB

Contributions of \$1,000 - \$2,499

James Casey

Joseph Hondros

John McBryan

CRUSADER CLUB

Contributions of \$100 - \$499

William Bell
Joseph Breslin
Timothy Duffy
Robert Heck
Thomas Juszczak
Francis McIntyre
Joseph Norris
Timothy Price
Brian Reidy
Paul Sarkissian
Frederick Ulmer

RED & BLUE CLUB

Contributions of \$1 - \$99

Mark Arcidiacono
Thomas Conway

Gaetano Ferraro
Kenneth Magrann
Thomas McHugh
Joseph Melnichuk
Mario Oliveti
Michael O'Neill
Robert Umile
James Wade

CLASS OF 1984

FATHER LOUIS BRISSON SOCIETY

Contributions of \$5,000 - \$9,999

Robert Karalius

James McCormick

PRESIDENT'S CLUB

Contributions of \$1,000 - \$2,499

Joseph Krisciunas

Paul Lemmo

William McMonagle

PRINCIPAL'S CLUB

Contributions of \$500 - \$999

James Wojnar

CRUSADER CLUB

Contributions of \$100 - \$499

Stephen Aichele

Robert Apple

James Boyer

Joseph Comas

Robert Fischer

David Gouck

Paul Groh

Hubert Manns

Robert Markey

Michael O'Donnell

RED & BLUE CLUB

Contributions of \$1 - \$99

Daniel Cassidy

Michael Elentrio

Francis Garritano

Robert Giammaruti

John Hoban

Louis Iatarola

John Ruppert

Vincent Sykes

Christopher Turner

Michael Wiercinski

John Wray

CLASS OF 1985

FATHER THOMAS JUDGE SOCIETY

Contributions of \$10,000+

Brian Dulin

ST. FRANCIS DE SALES CLUB

Contributions of \$2,500 - \$4,999

Harry Fisher

PRESIDENT'S CLUB

Contributions of \$1,000 - \$2,499

David Waskiewicz

PRINCIPAL'S CLUB

Contributions of \$500 - \$999

Mark McLaughlin

CRUSADER CLUB

Contributions of \$100 - \$499

Joseph Buccì

James Fox

Stephen Gessner

Nicholas McCormick

Robert Mulville

Christopher O'Shaughnessy

Daniel Starrs

RED & BLUE CLUB

Contributions of \$1 - \$99

Hugh Boyle

Reno Ciccotta

Joseph Daly

Gregory DelColombo

Andrew Drobonick

Robert Johnson

John Marlow

Vincent Tucci

Gregory Welsh

CLASS OF 1986

FATHER THOMAS JUDGE SOCIETY

Contributions of \$10,000+

John Seravalli

PRESIDENT'S CLUB

Contributions of \$1,000 - \$2,499

Christopher Jahn

John Tate

CRUSADER CLUB

Contributions of \$100 - \$499

Thomas Assenmacher

Christopher Creelman

Anthony Elentrio

Michael Magro

Christopher Maloney

Michael Purcell

RED & BLUE CLUB

Contributions of \$1 - \$99

Curt Balara

Scott Barcliff

Sean Bauer

Anthony DeRose

Michael Foley

Peter Gerace
John Groh
James Hanlon
John Hayburn
Charles McAllister
Patrick McGeehan
Thomas Mulvey
Michael Vahey
Jeffrey Zaborowski

CLASS OF 1987

PRESIDENT'S CLUB

Contributions of \$1,000 - \$2,499

Michael Clothier

John Colosimo

Stephen McManus

PRINCIPAL'S CLUB

Contributions of \$500 - \$999

Michael Bukowski

CRUSADER CLUB

Contributions of \$100 - \$499

John Darrah

William Flynn

Edward McDonald

Kenneth Michvech

Russell Stickler

Albert Turano

Brian Turner

David Wyszynski

RED & BLUE CLUB

Contributions of \$1 - \$99

Michael Adams

Edward Cox

William Dooley

David Fuller

John Harrington

Brian Henes

Francis McCafferty

Thomas McKeever

James McShea

Randall Nase

John Rajkowski

Peter Suder

Joseph Surina

Daniel Toth

Michael Viola

CLASS OF 1988

ST. FRANCIS DE SALES CLUB

Contributions of \$2,500 - \$4,999

Thomas Smyth

CRUSADER CLUB

Contributions of \$100 - \$499

Marco Aloisi
Jon-Paul Aylmer
Hugh Day
Gerald Dieckhaus
Michael Ernst
Christopher Fagan
James Giammaruti
James Lyons
Michael McGerry
Jay Moran
Daniel Nicastro
Bernard Rooney
Matthew Topley
Charles Walker
Frank Zornick

RED & BLUE CLUB

Contributions of \$1 - \$99

Joseph Cloud
Hugh Davis
Michael Donahue
Jeremiah Leary
Anthony McDonald
Thomas McNamara
Matthew Powers
Anthony Saldutti
Francis Sebold

CLASS OF 1989

FATHER THOMAS JUDGE SOCIETY

Contributions of \$10,000+

Michael Adamski

FATHER LOUIS BRISSON SOCIETY

Contributions of \$5,000 - \$9,999

Michael Sicilia

PRESIDENT'S CLUB

Contributions of \$1,000 - \$2,499

Sean Clements

Michael Curran

John Ginter

CRUSADER CLUB

Contributions of \$100 - \$499

Lawrence Berran
Edward Campbell
Michael Ebner
Robert Fitzgerald
Stephen Frumento
Ronald Gonzalez
John Green
Matthew Hasson
Timothy McCloskey
John McGovern

Matthew Melinson
Daniel Scannell
Frank Zwiercan
RED & BLUE CLUB
Contributions of \$1 - \$99
Robert Burke
George Dillon
James Madden
Martin Mansfield
Stephen Prendergast
Edward Smith

CLASS OF 1990

PRESIDENT'S CLUB

Contributions of \$1,000 - \$2,499

Robert Black

PRINCIPAL'S CLUB

Contributions of \$500 - \$999

Shaun McDevitt

Brian Quinn

Kenneth White

CRUSADER CLUB

Contributions of \$100 - \$499

Shawn Carlin

Michael Eroh

Dennis Giorno

Kevin Heron

Daniel Kane

Patrick McGuinness

William Simpson

George Smith

Brian Smyth

RED & BLUE CLUB

Contributions of \$1 - \$99

Sean Gola

Christopher Levush

Michael Tait

David Tercha

Richard Wolstenholme

Daniel Zaffino

CLASS OF 1991

PRINCIPAL'S CLUB

Contributions of \$500 - \$999

John Schmitt

CRUSADER CLUB

Contributions of \$100 - \$499

Ettore Dragone

Scott Henderson

Matthew Holm

Christopher Law

Michael Moreschi

Brian Schultz

Joseph Sweeney
Charles Warner
Frederick Wise

RED & BLUE CLUB

Contributions of \$1 - \$99

John Brady

William Buckius

Jason Budd

Brian Carr

Michael Clear

Kevin Dean

Kevin Enz

Christopher Fischer

Michael Fitzgerald

William Johnstone

Jeffrey Kelly

James McDonnell

David Murphy

Bro. Daniel Wisniewski

CLASS OF 1992

PRESIDENT'S CLUB

Contributions of \$1,000 - \$2,499

Craig Murray

CRUSADER CLUB

Contributions of \$100 - \$499

Charles Carson

Stephen Clark

Charles Huckel, Jr.

Jeffrey Mlynarski

Kevin Murray

Justin Plunkett

Ernest Sabato

RED & BLUE CLUB

Contributions of \$1 - \$99

James Becker

Duane Boyes

Kevin Campbell

Timothy Crowley

David Newhouse

Steven Pinnelli

Michael Previtera

Daniel Tracy

CLASS OF 1993

PRESIDENT'S CLUB

Contributions of \$1,000 - \$2,499

Roger Falloon

PRINCIPAL'S CLUB

Contributions of \$500 - \$999

Thomas McShane

CRUSADER CLUB

Contributions of \$100 - \$499

Matthew Egan

Anthony Mazzeo

James Morace

Collin Walsh

RED & BLUE CLUB

Contributions of \$1 - \$99

Brian Bittner

Robert Hassel

Robert Pacan

CLASS OF 1994

FATHER LOUIS BRISSON SOCIETY

Contributions of \$5,000 - \$9,999

Gregory Biles

PRINCIPAL'S CLUB

Contributions of \$500 - \$999

Michael Starsinic

CRUSADER CLUB

Contributions of \$100 - \$499

Edward Brun

Matthew Henrich

Michael Schafer

Anthony Stearn

RED & BLUE CLUB

Contributions of \$1 - \$99

Mark Bennis

Patrick Caulden

Donald Collins

Dominic Gambino

Michael Gatti

George Gaynor

Timothy Hart

Daryl Hirschmann

James Klinger

James McDonald

James O'Connell

Gregory Scruci

CLASS OF 1995

ST. FRANCIS DE SALES CLUB

Contributions of \$2,500 - \$4,999

Brian Holmes

CRUSADER CLUB

Contributions of \$100 - \$499

Michael Flanagan

Matthew Kaiser

Michael Little

Michael McDonnell

Salvatore Merlino

RED & BLUE CLUB

Contributions of \$1 - \$99

Charles Anerino

Ira Baker

Jeffrey Crescitelli

Lawrence Flagler

Frederick Graziani

Gregory Morace

Joseph Skala

Steven Stumpo

Michael Viscuse

Richard Willmunder

CLASS OF 1996

FATHER LOUIS BRISSON SOCIETY

Contributions of \$5,000 - \$9,999

Michael Cirillo

William Mandia

Thomas Quinn

CRUSADER CLUB

Contributions of \$100 - \$499

Paul Danifo

John Durkin

Kevin Schafer

John Henfey

Daniel Klein

Christopher Rotella

RED & BLUE CLUB

Contributions of \$1 - \$99

Brian Bucholski

Paul Gimbel

Kevin Kots

Frank Lodise

Vincent Moffatt

Joseph Nagele

Vincent Rotondi

CLASS OF 1997

PRESIDENT'S CLUB

Contributions of \$1,000 - \$2,499

Brian Patrick King

PRINCIPAL'S CLUB

Contributions of \$500 - \$999

Damien Golden

CRUSADER CLUB

Contributions of \$100 - \$499

Kilian Feeney

Brendan Fox

Charles Hanna

Ryan Kilkenny

Robert McCracken

William Stewart

John Sullivan

RED & BLUE CLUB

Contributions of \$1 - \$99

John Burke

Joseph Canty

Sean Patrick Corcoran

Michael Domanico

James Dutil

Kevin McGerry

Nicola Tilli

John Walker

CLASS OF 1998

CRUSADER CLUB

Contributions of \$100 - \$499

Brian Kabosius

James Murphy

Joseph Tyer

Brian Ward

RED & BLUE CLUB

Contributions of \$1 - \$99

Brendan Bownes

Kieran Dunleavy

Jeffrey George

James Gilboyne

Joseph Murray

Mark Perri

Daniel Schuster

CLASS OF 1999

PRINCIPAL'S CLUB

Contributions of \$500 - \$999

Christopher Roantree

Michael Scheiblein

CRUSADER CLUB

Contributions of \$100 - \$499

James Beaver

Brian Higgins

Kevin Huckel

Michael Kehl

Michael Pidhirsky

RED & BLUE CLUB

Contributions of \$1 - \$99

Brian Dutil

Eric Kurtz

Joseph McFadden

Michael McGinnis

Eric Pesce

Seamus Quinn

CLASS OF 2000

FATHER LOUIS BRISSON SOCIETY

Contributions of \$5,000 - \$9,999

Daniel Kilcoyne
Stephen Pidhirsky

PRESIDENT'S CLUB

Contributions of \$1,000 - \$2,499

Antonio Aponte

CRUSADER CLUB

Contributions of \$100 - \$499

Brian McGinley

RED & BLUE CLUB

Contributions of \$1 - \$99

Kirk Bucholski
Robert Citrino
Timothy Durkin
Kevin Hanlon
David Homsher
Sean McCloskey
Timothy Walton

CLASS OF 2001

CRUSADER CLUB

Contributions of \$100 - \$499

Colin Kilkenny

RED & BLUE CLUB

Contributions of \$1 - \$99

Michael Dreher
Michael Fee
Andrew Januszka
Nicholas Mallon
James McCann
Timothy Smith

CLASS OF 2002

FATHER LOUIS BRISSON SOCIETY

Contributions of \$5,000 - \$9,999

Michael Bottaro

PRINCIPAL'S CLUB

Contributions of \$500 - \$999

Matthew Henfey

CRUSADER CLUB

Contributions of \$100 - \$499

John Bowes
Richard Burns
Joshua Link
Thomas Lynch
John Murray
Kevin Pierce
Thomas Presser
Michael Schoeniger

RED & BLUE CLUB

Contributions of \$1 - \$99

Edward Bond
John Gaynor
Francis Mallon
Jeffrey Prigge

CLASS OF 2003

CRUSADER CLUB

Contributions of \$100 - \$499

Rev. Robert Ianelli

Mark McShea

RED & BLUE CLUB

Contributions of \$1 - \$99

Timothy Creelman
Joseph Haviland
Andrew Larmour
Matthew Mokan
Michael Nahill
Nicholas Ruggia
Stephen Toroni
Michael Westerfer

CLASS OF 2004

PRESIDENT'S CLUB

Contributions of \$1,000 - \$2,499

Stephen Ciabattoni

PRINCIPAL'S CLUB

Contributions of \$500 - \$999

James Emme

CRUSADER CLUB

Contributions of \$100 - \$499

Kevin Calvert
Sean Everitt
Kevin McLeish

RED & BLUE CLUB

Contributions of \$1 - \$99

Anthony Bateman
Andrew Flanagan
Matthew Kocher
Ryan McGinnis
Damon Snyder
Matthew Uliasz

CLASS OF 2005

CRUSADER CLUB

Contributions of \$100 - \$499

Brian Drissel
Jeffrey Long
Rogerio Matos
Graham Smialowski
Patrick Taylor

RED & BLUE CLUB

Contributions of \$1 - \$99

Thomas Beal
Francis Gana
Liam Slavin
Joseph VanBuskirk

CLASS OF 2006

CRUSADER CLUB

Contributions of \$100 - \$499

Michael McKnight

Stephen McLaughlin

Andrew Ricchezza

Dennis Tanghe

Kyle Wherrity

RED & BLUE CLUB

Contributions of \$1 - \$99

Timothy Dooley
Timothy Gallagher
Kevin Madeja
Nicholas Quigley
Christopher Ward

CLASS OF 2007

CRUSADER CLUB

Contributions of \$100 - \$499

William Heeney

Douglas Ulrich

RED & BLUE CLUB

Contributions of \$1 - \$99

Daniel Bontempo
Gabriel Mairone
James McCaffrey
Joseph Moskal
Matthew O'Kane
Matthew Sandford

CLASS OF 2008

CRUSADER CLUB

Contributions of \$100 - \$499

Michael Lloyd

RED & BLUE CLUB

Contributions of \$1 - \$99

Timothy Keough
James King
Christopher Mallard
Dustin McGeehan
Joseph McMonagle
Michael Prendergast

CLASS OF 2009

RED & BLUE CLUB

Contributions of \$1 - \$99

Anthony DeRose
Gregory Elgart
Cyril John

CLASS OF 2010

CRUSADER CLUB

Contributions of \$100 - \$499

Kevin Branigan

Sean Murphy

RED & BLUE CLUB

Contributions of \$1 - \$99

Anthony Lugrine
James Trainor

CLASS OF 2011

CRUSADER CLUB

Contributions of \$100 - \$499

David Falcone

RED & BLUE CLUB

Contributions of \$1 - \$99

Paul Coppola
Carmen Esposito
Jarred Gettes
Daniel Scavozzi

CLASS OF 2012

RED & BLUE CLUB

Contributions of \$1 - \$99

Steven Branigan
Joseph Long
Conor Lydon
Christopher Matase

CLASS OF 2013

RED & BLUE CLUB

Contributions of \$1 - \$99

Max Pascavitch

CLASS OF 2014

RED & BLUE CLUB

Contributions of \$1 - \$99

Joseph Malvestuto
Daniel Matase
James Plewes

CLASS OF 2015

RED & BLUE CLUB

Contributions of \$1 - \$99

Daniel DiBonaventura
Brendan Graham
Paul Leszczyszyn

CLASS OF 2016

CRUSADER CLUB

Contributions of \$100 - \$499

Tristyn Hoffman

RED & BLUE CLUB

Contributions of \$1 - \$99

Tyler Gettes
Christian Madeja
Joseph Rilling

CLASS OF 2017

RED & BLUE CLUB

Contributions of \$1 - \$99

Daniel Corcoran
Vincent Lugrine

BUSINESSES, PROFESSIONALS & FRIENDS

FATHER THOMAS JUDGE SOCIETY

Contributions of \$10,000+

Estate of Joseph Boyer
Seaport Pier, LLC

FATHER LOUIS BRISSON SOCIETY

Contributions of \$5,000 - \$9,999

Karen Daley Scheiblein

ST. FRANCIS DE SALES CLUB

Contributions of \$2,500 - \$4,999

John Oyler & Gail Faulkner

Gary Yourman

PRESIDENT'S CLUB

Contributions of \$1,000 - \$2,499

Dean & Susan Abshire

Class of 1958

Class of 1978

Class of 1999

Eckerle Property Management, LLC

EHS Technologies

Estate of David Pfeil

Garden State Property Restoration

Edward & Patricia King

Laborers' Local Union 57

Lisa Tran McKee

Krystal Mitchell

Paddy Whacks Irish Pub

Richard Prendergast

Greg Shissler

Timothy Campellone Memorial

Scholarship Fund

PRINCIPAL'S CLUB

Contributions of \$500 - \$999

Class of 1969

Class of 1979

Class of 2009

William Kelly

Ann Molishus

Robin Nolan

Thomas J. Kilkenny Memorial Fund

United Way of Greater Philadelphia
& SNJ

Douglas Williams

CRUSADER CLUB

Contributions of \$100 - \$499

Ancient Order of Hibernians Div 39

Thomas Baker

James Barr

Jane Bartelme

Donna Britt

Allen Broadbent
Class of 1993
Jennifer Corcoran
Colleen Dougherty

John Dunlop
Michael Fienman
Galaxy Rose LLC
Mary Gregory

Arthur Gutzler
Brian Holzhauser
James & Paula Lomanno
Thomas Madison

Kathleen McAnaney
Francis McAnaney
Charles McDonald
Robert McKaig

Michael Morrone
Mary Mueller
Thomas Murt
Dennis Oscapinski

Lori Paglia
Peter Quintans
Jennifer Raines
Joseph Rapczynski

Robert Rau
Joseph Reilly
Amy Rozdzielski
John Sabatina

Kathryn Scott
Marie Smith
Jared Solomon
St. Ephrem School

Visitation School
Russell Wagner
Martina White
Beth Anne Wood

RED & BLUE CLUB

Contributions of \$1 - \$99

Donna Arnold
Donna Balara
Albert Barger
Benevity Community Impact Fund

Michael Berardi
Helen Bowers
Thomas Burke
Eugene Carboni

Michelle Cehlar
Christine Clark
Guerline Coriolan
Rich D'Ambrosio

Tracey Davis
Jennifer Dennis
Lucille DiGiovanni

Patrick Dorney
Sandra Dost
Margaret Emme
Mark Falcone

Ann Fenstermaker
Deirdre Fisher
Christine Fitzpatrick
MaryBeth Foy

Michelle Ganley
Karou Gephart
Denise Gonzalez
Sandra Gregory

Kathleen Groves
Joseph Gulliespie
Karen Henry
Renee Hudson-Small

Michele Hutz
Jennifer Jeter
Barbara Jurgelewicz
John Kirk

Gary Kooba
La Salle College High School
Nancy Laquintano
Mary Lewcun

Elizabeth Lipinski
Joseph LoCarro
Helen Lydon
Patrick Matthews

Ellen Mazzoni
Elizabeth McCormack
Jennifer McGovern
Donna McGowan

Kimberly McKee
Timothy McKinstry
Russell Munson
Brian O'Neill

Libio Parrino
PayPal Giving Fund
Robert Phillips
Sheila Quigley

Joseph Ramsey
Dolores Reagle
Scott Rogers
Matthew Ruppe

Marlene Scatena
Cynthia Schrader
Regina Schwartz
Justine Schwartz

Dolores Sell
Jacqueline Senior
Brian Sharkey
Neil Skidmore
Al Taubenberger

John Thomas
Cynthia Tooher
Carl & Irene Tori
Truist

Stanley Trzaska
Kathleen Veneziaie
Lynn Walsh
Sandra Weiss

Ronald Wesemann
Kathleen Whalen
Christine Wismer
James Wismer

DONATIONS "IN MEMORY OF" "IN HONOR OF"

Ray Ahern '65

William McKenty '65

William Albertus '94

John Brady '91

All Veterans

Charles Liddell '72

James Angermeier '67

John Angermeier '69

Blaise Arnold '19

Donna Arnold

John Austin

William Foley '66

Charles Barker '57

Anonymous

Mark Falcone

Kevin Kilkenny '70

Dennis Oscapinski

Robert Rau

Marlene Scatena

Sandra Weiss

Harry Barnes '57

Tristyn Hoffman '16

Michael J. Bauer

John Gaynor '02

Jack Bense '63

Edward Hagan '63

Gerald Rowan '64

Timothy Berkelbach '69

Michael Devlin '69

Paul Bidlingmaier '61

William Boyle '61

Kyle Bittner '19

Brian Bittner '93

Michael Booth '68

Bernard Booth '66

John Brightcliffe '74

Joseph Sevick '75

Michael Brophy

Ronald Ciuffetelli '63

Michael Brown

Thomas Smyth '71

Charles Bushbeck '78

Lynn Walsh

Mary Campellone

Eugene Carboni

Renee Hudson-Small

Russell Wagner

Beth Anne Wood

Timothy Campellone '87

Beth Anne Wood

John Cantwell '57

Deirdre Fisher

Russell Munson

Cynthia Schrader

Regina Schwartz

Fergus Carroll '66

William Holt '69

Frank Reis '66

Robert Cendrowski '78

Edward Massara '78

Rev. Vincent Cirullo, OSFS

Karl Autenrieth '69

Bishop Joseph Cistone '67

Louis Guarrieri '71

Class of 1963

Robert Powell '63

Class of 1995

Gregory Morace '95

Peg & Bill Cleary

William Cleary '60

Rev. Richard Cleary, OSFS

Donald Klawiter '68

Jeff Clements '91

Sean Clements '89

Anne Conner

Edward & Patricia King

Donna McGowan

Thomas McKeever '87

Robert Phillips

Scott Rogers

Lisa Tran McKee

Jim Connors '82

Joseph Wojnar '82

Patrick Corcoran '65

Thomas Buckley '68

Patrick Coughlan '73

James Coughlan '76

Joseph, Rose and James D'Ascenzo

John D'Ascenzo '71

Bill Davis '79
Dennis Davis '81
Deceased members of the Class of 1969
John Adamski '69
Deceased members of the Class of 1976
Robert Montgomery '76
Deceased Veterans
Joseph Wagner '58
Colin Devlin '89
Daniel Scannell '89
James Dezart '68
Jane Bartelme
James "Squibb" DiGiovanni '76
James Barr
Michael Berardi
Lucille DiGiovanni
Sandra Gregory
John Thomas
Cynthia Tooher
Ronald Wesemann
Mark Dignam '78
Michael Riley '78
Helen DiSabatino
Ronald Di Sabatino '65
Jim Donnelly '70
Ancient Order of Hibernians Div 39
Donna Britt
John Kirk
La Salle College High School
Mary Mueller
Joseph Ramsey
Dolores Sell
Rev. Michael Donovan, OSFS
Thomas Gegeckas '72
Francis Dougherty, Jr. '65
Joseph Dougherty '65
Walter Dudek, Jr. '81
Timothy Dudek '74
William Duffy
Joseph Morrison '72
Joe Duggan
Russell Houseal '61
Jimmy Durkin '95
Michael Starsinic '94
Tim Fehrle '68
Joseph Rapczynski
Dennis Fenton '68
Richard Farina '68
Vincent Ferro '88
Frank Zornick '88
Fr. Thomas Fitzpatrick
Dennis McCrossen '72

Daniel Foy '20
Mary Beth Foy
John and Eleanor Frain
John Frain '81
Hugh Gallagher Sr.
Hugh Gallagher '81
James E. Gallagher '67
Joseph Gallagher '70
Franny Galloway '83
Thomas McHugh '83
Fr. Tom Gillespie
Joseph LoCarro
Brett Gonzalez '19
Denise Gonzalez
Clement Grassi '64
Joseph D'Ascenzo '69
Arthur Gutzler
John Truchel '64
Kevin Henes '88
Jon-Paul Aylmer '88
Greg Hennigar '02
Stephen Ciabattoni '04
Matthew Henfey '02
Donald Hertrich '66
John Walker '97
William Holland '57
Francis Pfeiffer '57
Thomas J. Howrie
Donald O'Grady '76
Jim Hughes
Michael Hughes '77
Charlie Jarvis '65
Gerald Bonino '65
Brian Jeter '23
Jennifer Jeter
The Johnston Family & Friends
William Johnston '73
Judge Guys from H&H
Michael Grant '70
Jonathon Jurgelewicz '19
Barbara Jurgelewicz
Stephen J. Kane '73
Edward Kane '68
Michael Kilderry '64
Joseph Whalen '68
Kevin Kilkenny '70
Ryan Kilkenny '97
Bernard Kissell, Jr.
Robert Kissell '70
William Lange '81
James Farrell '81
Andrew Laquintano '21
Nancy Laquintano

Mike Lipinski '72
Robert Gwiazdowski '72
Elizabeth Lipinski
Rick Losco
Cosmo Losco '80
Michael Lydon '03
Conor Lydon '12
Nicholas Lydon '19
Helen Lydon
John "Cub" Lyons '66
John Stengel '66
Roger Makon '65
Matthew Mokon '03
Lou Martine '61
Robert Farina '61
Frank McAnaney '21
Kathleen McAnaney
Dennis McDaniels '00
Jason Budd '91
Kilian Feeney '97
Ryan Kilkenny '97
Kevin Kilkenny '70
Seamus Quinn '99
Jeff McDaniels '99
Kilian Feeney '97
Kevin Kilkenny '70
James McHale '58
James McHale '79
William McKenna '77
Joseph Camm '77
Robert McLernan
Kathleen Whalen
John McMonagle
Joseph McMonagle '08
John and Margaret Minnich
John Minnich '76
Joseph Molishus '58
Ann Molishus
Jonh Moore '19
Ellen Mazzoni
Michael Morrone, Sr. NCHS '45
Michael Morrone
Neil Mullen '94
Jacqueline Senior
Dennis Mullen
Joseph Swety '78
Mike Muller '73
Joseph Walls '73
Rev. John Murphy, OSFS
Edward Gallagher '61
Bob Neary '70
Martin Walsh '71

James Nelson '97
Joseph Murray '98
Owen Newhouse '19
David Newhouse '92
Mary Nissley
Edward Nissley '73
Philip O'Connell '60
John Curlett '60
Philip DeLeo '61
Michael Kunz '61
Shawn O'Donnell '86
Anthony Elentrio '86
Our 27
Joseph Altimari '67
Edward Bond '02
John Bonner '75
Gerald Christie '65
John Curlett '60
Rich D'Ambrosio
Laurence Drabyak '71
John Fry '63
Joseph Hinnegan '67
James Jones '65
Patrick Keaveney '66
Kevin Kilkenny '70
Richard Krepol '63
James Morace '93
Gerald O'Connell '58
Frank Rooney '64
William Schmid '71
Richard Serfass '59
John Wray '84
Armando Paglia '22
Lori Paglia
Frank Palma '74
Thomas Broskey '80
Ryan Parkes
Joseph VanBuskirk '05
William & Mary Paschall, William
Paschall, Jr.
Richard Paschall '61
William Patras, Jr. '72
Kathryn Scott
Francis Pfeiffer '57
Kevin Calvert '04
Anna May Purring
Albert Barger
Anna May Purring
Brian Sharkey
Rich Primiano '59
Gregory Weber '60
Matthew Purcell '19
Michael Purcell '86

Dennis Quinn '78
John Stelmanski '78
Bernard Rayca '66
Kathryn Scott
Thomas Roach
Duane Boyes '92
William Rocchi '78
Joseph Camm '77
Bob Rominiecki '60
Leon Rominiecki '65
Rich Sasin '69
John McCann '65
Michael Sautter '75
Edward O'Malley '75
Col. Paul Schreiber USMC '74
Michael Hughes '77
John Senior '65
Jacqueline Senior
Bobby Senner '06
William Burg '74
Klemenz Stanger '58
Perry Stanger '78
Whitey Sullivan
John Fry '63
Daniel Tait '19
Michael Tait '90
Ed Tobin '89
Daniel Scannell '89
Richard Tomaszewski '74
Francis Thorpe '75
James Toughill '73
Edward Pokrywka '72
George Townsend '66
Joseph Golden '66
William Keweshan '62
Rev. Joseph Travers, OSFS
Edward Gallagher '61
John Venezia '19
Kathleen Venezia
Henry & Suzette Weber
Gregory Weber '60
John Wismer '74
Anonymous
Allen Broadbent
Charles McDonald
Joseph Reilly
John Scanlon '74
Richard Wismer '73
Thomas Wismer '76
James Wismer
Christine Wismer
Thaddeus Wojnar
Joseph Wojnar '82

TUITION ASSISTANCE

Thanks to the Educational Improvement Tax Credit (EITC) and Opportunity Scholarship Tax Credit (OSTC) programs in Pennsylvania as well as the generosity of various alumni, individual and family donors, corporations, foundation and non-profit institutions, we are able to provide significant financial assistance to our most deserving students. Without such support as need-based tuition assistance and merit scholarships, some of our families would simply not be able to afford a Father Judge education for their sons.

EITC AND OSTC CONTRIBUTING COMPANIES/ INDIVIDUALS

\$572,633

Michael Adams '74
 Michael Adamski '88
 Theodore Aicher '83
 Al Altomari '77
 Christopher Bell
 Louis Busico '81
 Brian Dulin '85
 Elliott-Lewis Corporation
 Bill Sautter '63
 Fidelio Insurance Company
 Mario Mele
 Daniel Fitzpatrick '81
 Joseph Fluehr '57
 John Geverd '63
 Greenwood Gaming & Entertainment
 Anthony Ricci '73
 Michael Hammond '70
 James J. Anderson Construction
 James Anderson '68
 Dennis Johnson '68
 Legacy Advisors
 Jonh Krol '73

Vincent Lowry '69
 Maguire Enterprises
 Gerald Manna '60
 Steven Marinucci '66
 Mini Melts of America
 Shawn Kilcoyne '97 &
 Dan Kilcoyne '00
 Charles Murray '76
 Robert O'Hara '68
 PA Partners for Education, LLC
 John Dugan '81
 Penn Jersey Paper
 Donald Salmon '72
 Seravalli, Inc.
 Charles Seravalli '66
 Anthony Seravalli
 Charles Seravalli '66
 Francis Seravalli '81
 John Seravalli '86
 Streamline Payroll
 Brian Tierney '78
 Torresdale Flower Shop
 Waste Management

REV. JOSEPH G. CAMPPELLONE OSFS ENDOWMENT FUND

\$13,660

Jon & Joanie Bevilacqua
 William Burg '74
 Rev. Joseph A. DiMauro, OSFS
 Thomas B. Fenerty '66
 David Gallo '79
 Charles Huckel, Sr. '66
 James McDonald '64
 William Mitchell '59
 Edward Mooney
 Stanley Musial '79
 Ralph Olson '62
 Mr. & Mrs. Thomas Plungis
 John & Patricia Policino
 William F. Quilty, III
 Thomas Quinn '96
 Mike & Rosemary Smith
 Robert Townsend '76
 James Unger '67

SCHOLARSHIPS AND GRANTS

\$1,192,021

AAA Asphalt Inc.
 Addario Family Scholarship
 Ancient Order of Hibernians Division 39
 Ancient Order of Hibernians Division 61
 Andrew Bain Memorial Scholarship Fund
 Archbishop Grant
 Association of Catholic Teachers
 Caplan Fund
 Catholic Daughters of the Americas
 CEO America
 Children First Scholarship Fund, Inc.
 Colleen P. Smith Memorial
 Scholarship Fund
 Connelly Achievement Scholarship
 Daniel Sweeney Memorial
 Scholarship Fund
 Dave Kapral Memorial Fund
 District Council 21 Ralph Williams
 Scholarship
 Edward A. Peters Memorial Scholarship
 Edward Hamill Scholarship
 Father Michael Heim Fund
 FOFJ Cronies Group
 Garden State FOFJ
 Gerner Family Scholarship
 Hennigar Funds
 Inn Dwelling, Inc. Of Northeast
 Philadelphia
 James J. Clement Scholarship Award
 James Nelson Scholarship Fund
 James R. Scheiblein Memorial
 Scholarship
 JFH Memorial Scholarship
 Joey Casey Memorial Scholarship Fund
 John G. Beatty, Jr. Memorial Scholarship
 Keith Gerard Mayer Tuition
 Assistance Fund
 Ladies Ancient Order of Hibernians
 Division 39
 Lt. Robert P. Neary Memorial Scholarship
 Maguire Scholarship
 Manor College subsidization FOFJ
 Mark Dignam Scholarship
 Mark Keeley Memorial Fund
 Matthew Holmes Scholarship Fund

Michael J. Kilderry Scholarship
 Michael Sautter Scholarship Fund
 Mike Lipinski '72 Fund
 Neumann Scholarship
 Norphans, Inc.
 North Catholic Alumni Memorial
 Scholarship Fund
 Officer Charles E. "Chuck" Cassidy
 Memorial Scholarship
 Our Lady Calvary School Philadelphia
 Our Lady of Port Richmond
 Matching Grant
 Patrick Gallagher Memorial
 Scholarship Fund
 Paul McCaffrey Scholarship Fund
 Rich Sasin '65 Scholarship
 Sean P. Miller Scholarship Fund
 Sgt. Patrick McDonald Scholarship
 Sister Evelyn Mignone Memorial Grant
 St. John Vianney Scholarship
 Stone Mor Scholarship
 Tacony Mayfair Lodge #447
 The Danny Craig Foundation
 The Eckerle Scholarship Fund
 The Friends of the Schickling Family
 The Terry Black Scholarship Fund
 The Vietnam Memorial Senior
 Service Scholarship
 Thomas McNally Scholarship Fund
 Tim Campellone Memorial Scholarship
 Valley Solutions, Inc.

2018-2019 EVENTS

PRESIDENT'S CHALLENGE CUP October 8, 2018

\$120,320

The 12th Annual President's Cup was held at the Union League Golf Club at Torresdale. More than 100 alumni, corporate leaders, business owners, politicians, and union officials gathered for lunch, golf and dinner. All proceeds from the event helped to purchase three new vans for school sports and activities.

A & S Electric, Inc.
 Michael Angelone
 A-Best Vending
 Alex Epstein
 Alfred Altomari '77
 Arch Management Company LLC
 Samuel King '66
 BLOCS
 Bill O'Brien
 Blue Cross Broad St. Run
 Leo Dignam '77
 BSI Construction, LLC
 John Parsons '77
 Carr & Duff, Inc.
 Gary Fetterolf
 Cescaphe Limited
 Joseph Volpe '87
 CFC Enterprises, Inc.
 Charles Calvanese '62
 Citizens Bank
 Daniel Fitzpatrick '81
 Clearco Products Company, Inc.
 John Cleary '62
 Cooke Publishing Company
 Louis Guarrieri, Jr. '71
 DeSales University
 Rev. James Greenfield, OSFS '79
 State Rep. Michael Driscoll
 Elliott-Lewis Corporation
 William Sautter '63
 Flynn O'Hara
 Sean Flynn
 Francis R. Galante Funeral Home
 Francis Galante '59
 Green Keepers, Inc.
 Frank Carroll
 Heritage Insurance Services
 Edward Pokrywka '72
 Holt Logistics Corp.
 William Streich
 IBEW Local Union 98
 John Dougherty
 IUPAT District Council 21
 Joseph Ashdale '74
 J.T. Miller Co. Inc.
 Edward Miller
 James J. Anderson Construction Co., Inc.
 James Anderson '68
 James J. Dougherty Funeral Home Inc.
 John Bonner, Jr. '75
 Robert Keyes '81
 Legacy Advisors
 John Krol '73

M.A.R.C.
 Thomas Conway '83 &
 Christopher Creelman '86
 Maley Givens, Counsellors at Law
 James Maley, Esq. '75
 Manor College
 Jonathan Peri
 James McCormick '84
 Francis McGarvey, Jr. '77
 Thomas McGowan '70
 Mini Melts of America, Inc.
 Shawn Kilcoyne '97, Daniel
 Kilcoyne '00 & Charles Hanna '97
 William Mitchell '59
 Vincent Morrison, Esq. '69
 Neumann University
 Chris Domes
 Northmarq Advisors, LLC
 Matthew Whitworth
 Omni Sales Inc.
 Gary McCaffery '73
 John O'Rourke '68
 Paddy Whacks Irish Sports Pub
 Joe Affet '92, Casey Jones '92,
 Matt Jones '95, & DJ Jones '97
 Parx Casino
 Anthony Ricci, Jr. '73
 Stephen Pidhirsky '00
 Professional Receivables Network
 Donald Saleski
 Seravalli Inc.
 Seravalli Brothers
 Thomas Smyth, CPA
 St. Clair CPAS, P.C.
 William St. Clair '75
 Stradley Ronon Stevens & Young, LLP
 William Mandia, Esq. '96
 Streamline Payroll
 Brian Tierney '78
 Thermal Solutions Contracting Inc.
 Gerald McCaffery '76
 Toodles Creative Media, LLC
 DJ Jones '97
 Viscontto Funeral Home, Inc.
 Louis Viscontto '72

A TASTE OF NORTHEAST PHILLY

October 20, 2018

\$19,870

The 16th Annual Taste of Northeast Philly hosted more than 800 alumni, friends, parents and neighbors enjoyed a night of entertainment and, most importantly, a "taste" of great food provided by local bars, restaurants, pubs, caterers, delis and bakeries. It was a great night for networking, socializing and supporting Father Judge High School.

Mark Adelsberger '80
 Al's Corner Deli
 Carabba's
 Chickie's and Pete's
 Dom Punzo '13
 Derek Talley '02
 DNH Catering
 Derek Vogelman '85
 Domenico's
 Dress Up Time
 Drexel Athletics
 Michele Fagan
 Flyers Skate Zone
 Gallo's Seafood
 James Harvey '78
 Gino's Italian Restaurant
 Grey Lodge Pub
 Mike Scotese '83
 Holmesburg Bakery
 Jeanne Sauer and Family
 Joe Ems - State Farm Insurance
 Joe Santucci's Bar and Grill
 John F. Byrne Golf Course
 Kevin Kilkenny '70
 La Salle University
 Linden Italian Market
 Maggie's Waterfront Café
 Kevin Goodchild '87
 Marinucci's Deli
 Chris Klos '97
 Mayfair Beverage
 Larry Wetzell '91
 Mayfair Diner

Nazareth Academy
 Nifty Fifties
 Oteri's Italian Bakery
 Paddy Whacks Irish Sports Pub
 Joe Affet '92, Casey Jones '92,
 Matt Jones '95, & DJ Jones '97
 Pawlowski Family
 Philadelphia Eagles
 Nick Wagner '02
 Philadelphia Phillies
 Eric Pesce '99
 Marie Smith
 St. Hubert High School
 St. Joseph's University
 Michael Payne '93
 Sweet Delights
 Sweet Lucy's Smokehouse
 Texas Roadhouse
 The Ashburner Inn
 James Harvey '78
 The Dining Car
 Three Monkeys Café
 Ed McDonald '87, Mike
 McDonald '91, & Gavin Wolfe '91
 Tony's Famous Tomato Pie
 Torredale Flower Shop

HUCK-N-DUCK GOLF CLASSIC

April 22, 2019

\$41,126

The 40th Annual Huck-N-Duck was held at Philmont Country Club where more than 100 alumni and friends gathered for the annual golf classic named in honor of Charlie "Huck" Huckel '66 and Jim "Duck" McDonald '64.

Allied Building Supply/ A Beacon
 Roofing Supply Co.
 Marc Ross '05
 Al Altomari '77
 Mike Amoroso '69
 Berkshire Hathaway
 Jack Lacey '70
 Bill Burg '74
 Frank Cahill
 Chickie's & Pete's
 Peter Ciarrocchi

Conaway Roofing
 Dave McGrath '78
 Cooke Publishing Company
 Louis Guarrieri '71
 Edward A. Peters Memorial Fund
 Thomas Peters '93
 Elliott-Lewis Corporation
 Bill Sautter '63 & Fran McDonald '65
 Gearo's
 Fran Primavera
 IUPAT District Council 21
 Joseph Ashdale '74
 James J. Dougherty Funeral Home Inc.
 Jack Bonner '75 & Brett Mahan '74
 Karr Barth Associates, Inc.
 Michael Grugan '98
 Eddie Krystopowicz '66
 Lawrence Davis '80
 Legacy Advisors
 John Krol '73
 Lor-Mar Mechanical Services
 Tom Marcinek '79
 Maley & Associates
 James Maley '75
 McDonald/McAdams Families
 Frank McAdams '57
 McGeehans
 Pat McGeehan '86
 Tom McGowan '70
 Frank McKelvey '71
 Mercury Systems LLC
 Tom Walsh '66 & Tom Walsh '98
 Milillo Event Group
 Ed Milillo
 William Mitchell '59
 Olde Towne Real Estate
 Edward Kent '61
 Paddy Whacks Irish Sports Pub
 Joe Affet '92, Casey Jones '92,
 Matt Jones '95, & DJ Jones '97
 Ed Peters '82

HALL OF FAME INDUCTION

May 8, 2019

\$90,475

The 22nd Annual Hall of Fame was held at the Vie Ballroom on Broad Street. Over 300 alumni and friends

gathered to celebrate the induction of six deserving honorees – William J. Burg '74, Joseph Carleone '63, James P. Greene (AWHS) '70, Gerald D. Haffey '75, Gerard Law '91, Vincent J. Morrison, Esq. '69, BG John C. Woods, U.S.A. (Ret) '71.

Al Altomari '77
 Ambrosia Treatment Centers
 Gerald Haffey '75
 Arch Management LLC
 Samuel King '66
 William Burg '74
 Carleone Partners
 Joseph Carleone, PhD '63
 CFC Enterprises, Inc.
 Charles Calvanese '62
 Commonwealth Campus
 Joseph Byrne '93
 Drexel University
 John Fry
 Elliott-Lewis Corp.
 William Sautter '63 & Francis
 McDonald '65
 Gray & Oscar LLC
 Michael Oscar '94
 Kevin Huckel, Sr. '73
 J&J Snack Foods Corp.
 Gerard Law '91
 Robert Keyes '81
 KK Renovations
 Vincent Lowry '69
 The Lynch Brothers
 Thomas '66, James '67, Paul '70
 & Robert '74
 Joseph Mallamaci
 Kevin J. Malloy '71
 Patrick McGonigal '81
 Navmar Applied Sciences Corp.
 Thomas Fenerty '66
 Dr. Louis Perrone '61
 Dr. John Scanlon '74
 Seravalli, Inc.
 Charles Seravalli '66
 St. Hubert High School
 Lizanne Pando
 John Woods '71



FATHER JUDGE HIGH SCHOOL
OFFICE OF ADVANCEMENT & ALUMNI AFFAIRS
3301 Solly Avenue
Philadelphia, PA 19136-2396
Address Service Requested

UPCOMING EVENTS

TURKEYFEST
ALUMNI HAPPY HOUR
@ FATHER JUDGE HIGH SCHOOL
Wednesday, November 27, 2019

TURKEY BOWL
@ ABRAHAM LINCOLN
HIGH SCHOOL
Thursday, November 28, 2019

CLASS OF 1994
25TH REUNION
@ MAGGIE'S WATERFRONT CAFÉ
Saturday, November 30, 2019

CLASS OF 2010
10TH REUNION
@ MAGGIE'S WATERFRONT CAFÉ
Saturday, February 29, 2020

CLASS OF 2000
20TH REUNION
@ PADDY WHACKS WELSH ROAD
Saturday, April 4, 2020

HUCK N DUCK
ALUMNI GOLF CLASSIC
@ PHILMONT COUNTRY CLUB
Monday, April 27, 2020

HALL OF FAME
@ VIE
Thursday, May 7, 2020

ALUMNI BBQ
@ FATHER JUDGE HIGH SCHOOL
Thursday, June 11, 2020

For more information, please visit
www.friendsoffatherjudge.com
or contact the Development Office
at 215-338-9494 x1170.