

1 Beyond™ Wrangler™

2D & 3D Portable Tapeless Ingest/Edit System

Industry's First Universal Portable, Ruggedized, Data Wrangler Video Systems

- **Rapidly Off-Load P2, Alexa SxS, RED, Phantom, or SI-2K** tapeless memory cards or disks while shooting on-set or on-location
- **Off-Load to disks and LTO5 Simultaneously**
- **Instantly Review or Add Metadata** to video clips
- **Preview high resolution** full screen video results
- **Optional Dailies - Editing in-field for:**
 - **Film or Documentary** "rough cuts"
 - **Instant on-set playback** Scene and Green Screen Chroma keyed
 - **Daily reviews** connected to HD LCD or projector
 - **Final edits** e.g. for remote ENG markets to quickly upload and Air News



Wrangler
Dude



Wrangler
Pro / Super

Three 1 Beyond Wrangler™ models:

Wrangler Dude™	Wrangler Pro	Super Wrangler
2-4 GoHDCart, 12 lbs 7" 1024x768 LCD	2-4 GoHDCart / GoHDMag, 38 lbs 17" 1920x1200 LCD	2-4 GoHDCart / GoHDMag, 40 lbs 17" 1920x1200 LCD
Dual Hot Swap Batteries – up to 8 Hrs	AC Power / DC option	AC Power
Options for ARRI Alexa, Sony, RED, Panasonic, Phantom, SI-2K and other formats		

1 Beyond Wrangler Software:

- **Fastest** and only Parallel multi-card unloading with simultaneous output to multiple devices
- **True appliance operation** - Completely automatic tapeless memory unload
- **Visual review** of 2D or 3D Video captured with associated Metadata review / editing
- **Tightly Integrated with Viewer** Auto registration and viewing of new video while ingesting additional cards
- **Other Video Formats available** - latest 2D & 3D Cameras and auto Proxy generation



1 Beyond GoHDCart

Additional Features of all 1 Beyond Wrangler units:

- **Choice of card readers**, DVD burner (optional Blu-ray), DVI output for additional HD monitor or HD projector
- **Completely self-contained**, Ruggedized, Portable systems w/ Roll-about case for easy travel
- **Full sized keyboard** with numeric keypad and touchpad, fold down for screen access
- **1 Beyond GoHDCart** Hot-Swappable disk cartridges 750GB, 7200RPM, cast aluminum housing with rubber shock absorbers inside, RAID Protection. Designed for:
 - **Unlimited capacity, resilient** to rough courier and crew handling
 - **Easy, instant data movement** to any 1 Beyond tapeless workflow or customer device
 - **Security encryption for shipping/handling** - optional 256 bit encryption with HW key
- **1 Beyond Wrangler Reader Compatible** - Full line of GoHDCart/GoHDMag Readers for Mac or PC, any bus

1 Beyond Wrangler Options include:

- **Editing:** Certified with Avid Media Composer, Adobe CS, AJA Kona, Blackmagic
- **Built-in LTO5** tape for (Insurance / Bond qualified) archiving - Wrangler Pro & Super Wrangler
- **HD-SDI, HDMI, Component output** for professional 2D or 3D Video monitoring
- **Additional Battery Charger and Intelligent Batteries** - Wrangler Dude

GOVERNMENT: GSA #GS-35F-0850N

" In Service, Technology and Value, We Are..."

1 Beyond
DIGITAL VIDEO SYSTEMS

www.1Beyond.com - toll free 877.ONE BEYOND [877.663.2396]

© Copyright 2005 - 1 Beyond, Inc. - All Rights Reserved - All logos and trademarks are the properties of their respective owners.
All offers, prices and configurations are subject to change without notice.

1 Beyond™ Wrangler™

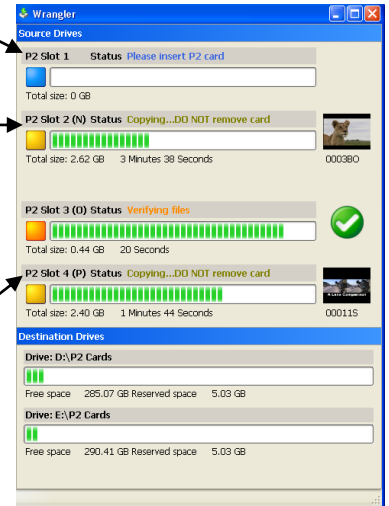
Unique Software Features

****Example below highlights P2 workflow -- Process is similar for all other formats****

SD Card Programming: Before the shoot, the Wrangler's SD card reader is used to program the individual metadata for each camera.

Transfer and Verify process: Note: Throughout the process, very clear status is indicated with each step being - color coded.

1. **Ok to Insert P2 card: (Blue)** The slot is ready to receive a P2 card.
2. **Check for and Reserve Space: (Yellow)** First the total card size (usage) is noted to verify and reserve space on all destination drives. This unique feature avoids transfer almost complete and finding out there is insufficient space.
3. **Transferring P2 card: (Yellow)** The P2 card is read in a unique clip by clip sequence giving the visual feedback of a thumbnail of each clip read to give the user reassurance that each clip is indeed being transferred onto the redundant disks and optional LTO5 Tape(s)..
4. **Complete byte by byte P2 Card Verification: (Orange)** If the "Verify" Option is turned on, the clip contents of the P2 card are compared to the each redundant disk individually, Note: Independent disks are much more convenient and safer than Raid 1 disks. This yields 2 independent Camera Master Originals unlike tape.
5. **The P2 Redundant Transfer and Verify Process is now complete: (Green) and the P2 card can be removed.**
6. **Error Conditions: (RED)** One of the unique design features of the Wrangler software is the ability to identify and recover from and indicate proper action for error conditions. Some examples are:
 - o **Bad Clip(s):** The Wrangler first checks the P2 card to determine if there are "Bad" (or incomplete) clips. This unique feature of the Wrangler software identifies a very rare condition that can be caused by the battery being removed or dying while shooting. Once identified, these clips can be easily repaired in any Panasonic P2 camera or deck. If other software is used and they are not identified, they will be lost.
 - o **Card Removed before completion:** If the card is removed before the process is complete, an Error Condition is indicated with a message. Note: On occasion this may be done deliberately and one of the benefits of the unique "Clip by Clip" transfer method is all clips to that point will be complete and useable. When this error is identified, the card can simply be reinserted for a complete transfer.
7. **Panasonic P2 Viewer Integration:** When the transfer process is complete, the new "Virtual Clips" are automatically registered with the Panasonic P2 Viewer software. The video and meta data can immediately be reviewed on the large Wrangler screen.
8. **Immediate LTO5 Archive:** With the Wrangler LTO5 LTFS digital tape option, 1 or 2 LTO5 archive tapes can be recorded simultaneously with disks. No more extra step that took longer than the disk copies. Note: All LTO tape copies are also "read after write" verified.



1 Beyond Wrangler Software Options include:

- **Encoding:** When the encoding option is used, a clip can be automatically encoded to one or more additional formats after the transfer process is complete.

GOVERNMENT: GSA # GS-35F-0850N

" In Service, Technology and Value, We Are..."

1 Beyond
DIGITAL VIDEO SYSTEMS

www.1Beyond.com - toll free 877.ONE BEYOND [877.663.2396]

© Copyright 2005 - 1 Beyond, Inc. - All Rights Reserved - All logos and trademarks are the properties of their respective owners. All offers, prices and configurations are subject to change without notice.