

# Body Contour Definition Program

BIOSTRATA CANADA  
innovative . natural . effective

## ① Anti Cellulite Body Contour Cream

This highly active and intensive cream is formulated to improve the appearance while moisturizing skin in troubled and problem areas. The fast acting Body contour helps promote skin firmness and smoothness.

**DIRECTIONS** | To be use on the cellulite on the arm and abdomen. Use sufficient amount (4-5 pumps) and massage into skin, twice daily. Follow massage instructions.



### Active Ingredients:

**VEXEL** | combines caffeine with palmitoyl-carnitine to help improve tone, firm, restore elasticity and reduce slackening of skin especially for the stomach, arms and décolleté. In clinical studies, panelists who used products with Vexel for 28 days reported that the skin was more toned by 73%, firmer by 78% and tighter by 85%.

**COAXEL** | a slimming active ingredient intended for the cosmetic remodeling of the silhouette and the treatment of excess fat problems.

**INTENSLIM** | Intenslim™ fights against fat predominantly accumulated in the stomach area and promotes the synthesis of desnutrin, a key enzyme in lipolysis activation. It also soothes the inflammation reaction caused by trans fatty acids.

[PLANT]-SEAWEED EXTRACT | Helps with reducing cellulite and fats. It is an effective natural weight loss active ingredient.

[AMINO ACID]-ACETYL-L-CARNITINE HCL | Stimulate fats metabolism to reduce fat tissue under the skin.

[HERB] FENUGREEK EXTRACT | Healing effects through enhancing blood circulation.

[PLANT]-BUTCHER'S BROOMS EXTRACT | Detoxification and balance water retention properties.

[PLANT]-ALOE VERA EXTRACT | Moisturizes, conditions, softens, soothes.

[PLANT]-CHAMOMILE EXTRACT | A natural botanical extract with soothing and anti-inflammatory properties.

### Panel Test Indicates:

Skin is more tone:  
**73%**

Skin is firmer:  
**78%**

Skin has less slack:  
**85%**

Up to 3.90cm waist  
reduction in 2  
months

Applied Area  
Visible reduction



### ⊙ Circumference reduction

AEVA (Aging Evaluation).  
An innovative fringe projection method  
for 3-dimensional measurement.

- T1 month ..... -0.53 cm/T0, p<0.05 up to -3.40 cm
  - T2 months ..... -0.99 cm/T0, p<0.01 up to -3.90 cm
- with 80% of responders

The stomach circumference is reduced by 0.99 cm and as much as 3.90 cm after 2 months which corresponds to 1 garment size.

Stock up on  
**vitality and tonus!**

Arms  
Décolleté  
Stomach

They have answered...  
after 28 days

- skin is more tone **73%\***
- skin is firmer **78%\***
- skin is has less slack **85%\***

\*in vivo study including 111 volunteers - Self-evaluation



### Fitting into a smaller size

Mean waist size  
reduction  
of **0.99 cm**  
up to **3.90 cm**  
after 2 months

# Body Contour Definition Program

## ② Body Detox and Toning Ampoule

### Body Detox and Toning Ampoule (10 mls)

Firms and tones the whole body. Fights fat accumulation in the stomach and thigh area while promoting slimming benefits.

\*Intenseslim significantly reduced fat thickness on the stomach after twice daily two month of application. (pictures)

Direction of use: Use two full nozzle squeezes twice daily on the abdominal area. Follow massage directions.



Actives:  
Essential Oils Mix  
Lavender Oil  
Ylang Ylang Oil  
Siberian Pine Oil

Caffiene  
Argan Oil

### INTENSLIM™

Applied Area  
Visible reduction

#### ⊙ Circumference reduction

AEVA (Aging EVALuation).  
An innovative fringe projection method for 3-dimensional measurement.



- ⊙ T1 month ..... -0.53 cm/T0, p<0.05 up to -3.40 cm
- ⊙ T2 months ..... -0.99 cm/T0, p<0.01 up to -3.90 cm with 80% of responders

The stomach circumference is reduced by 0.99 cm and as much as 3.90 cm after 2 months which corresponds to 1 garment size.

Function:  
Fights fat accumulation, particularly on the stomach area.

### VEXEL™

Function:  
Firms and tones, reduces slackening of skin (arms, stomach and décolleté) thanks to the synergistic action of two molecules.



Mean waist size reduction  
of **0.99 cm**  
up to **3.90 cm**  
after 2 months

#### In vitro tests - Intenseslim™ 4%

- ⊙ Inhibition of preadipocyte differentiation on preadipocytes
  - ⊙ G3PCH (glycerol-3-phosphate acyltransferase) ..... -98%/control, p<0.01
  - ⊙ FAS (Fatty Acid Synthase) ..... -74%/control, p<0.01
- ⊙ Lipolysis activation and reduction of adipocyte storage on mature human adipocytes
  - ⊙ Desnutrin ..... +10.4%, p<0.01
  - ⊙ Triglycerides in the presence of trans fatty acids\* ..... -40%, p<0.01
  - ⊙ Glycerol release ..... +38.2%, p<0.01
  - ⊙ LPL (Lipoprotein Lipase) expression ..... -69%



Intenseslim™ boosts the lipolysis reaction by stimulating the expression of the desnutrin protein.

- ⊙ Anti-inflammatory activity on mature human adipocytes
  - ⊙ IL-6 synthesis on a standard medium ..... -77%/control, p<0.01
  - ⊙ In the presence of trans fatty acids\* ..... -54%/control, p<0.01
  - ⊙ Adiponectin synthesis ..... +73%/control, p<0.01

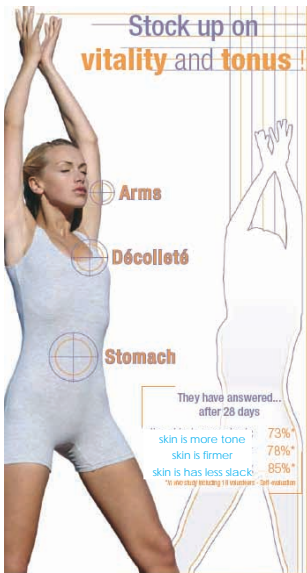
Intenseslim™ soothes the inflammatory reaction generated by an unhealthy diet.

- ⊙ Decongestion of the adipose tissue on human skin explants after application of a cream with 4% Intenseslim™ for 5 days
  - ⊙ Adipocyte volume reduction ..... -29%/control, p<0.01



- ⊙ Elastin synthesis ..... +182%/control, p<0.01

Intenseslim™ improves the adipose tissue elasticity in order to help the adipocytes to return to their original shape.



**FUNCTION** | Firms and tones, reduces slackening of skin (arms, stomach and décolleté) thanks to the synergistic action of two molecules.

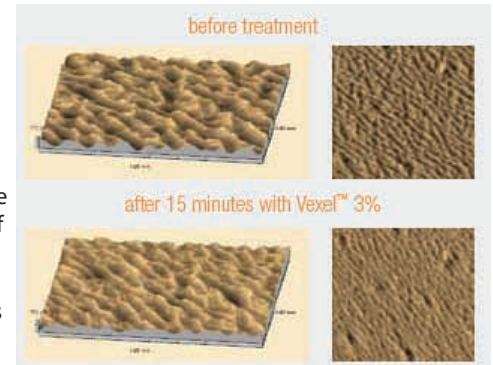
**PROPERTIES** | Increases firmness, elasticity and skin tonicity of stomach and arms. Provides an immediate smoothing effect on the décolleté.

**TESTING** | Sederma (France) on 19 women. Twice daily application on the arms and stomach for 1 month.

Panel indicates:

skin is more toned 73%  
skin is firmer 78%  
skin is has less slack 85%  
\*Study results. Self-evaluation.

Measurement of immediate skin tone by image analysis of the micro-depressionary network 15 minutes after treatment.



Decrease of roughness -24%

● ARMS

Cutometry at 28 days	Firmness	Elasticity	Tonus
Mean variation	+5.3% p<0.05	+8.6% p<0.01	+14.7% p<0.01
Maximum variation	+19.7%	+24%	+43.7%
% Volunteers with improvement	75%	85%	85%

● STOMACH

Cutometry at 28 days	Firmness	Elasticity	Tonus
Mean variation	+7% p<0.05	+7.6% p<0.01	+15.4% p<0.01
Maximum variation	+20%	+18.7%	+35.6%
% Volunteers with improvement	70%	75%	100%

INTENSLIM™

⊙ Circumference reduction

AEVA (Aging EVALuation).  
An innovative fringe projection method for 3-dimensional measurement.



- T1 month ..... -0.53 cm/T0, p<0.05 up to -3.40 cm
- T2 months ..... -0.99 cm/T0, p<0.01 up to -3.90 cm with 80% of responders

The stomach circumference is reduced by 0.99 cm and as much as 3.90 cm after 2 months which corresponds to 1 garment size.

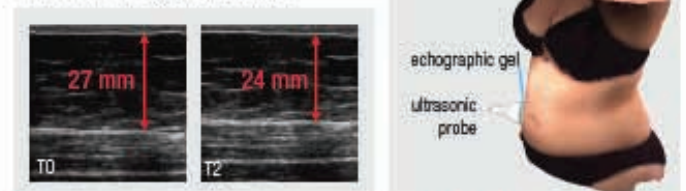
**FUNCTION** | Fights fat accumulation, particularly on the stomach area.

**PROPERTIES** | Soothes inflammation and promotes reduction of the adipose tissue, resulting in the decongestion of the hypodermis.

**TESTING** | Sederma (France) on 27 female volunteers, mean age 37.5 [22 to 49 years old] for 2 months. Applied twice daily.

⊙ Adipose tissue thickness reduction

Ultrasonic echography 10 MHz:



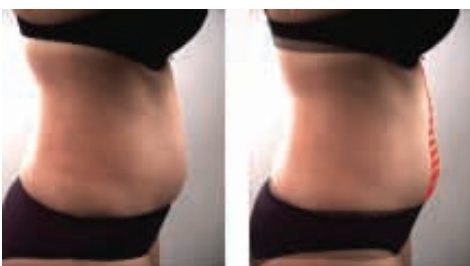
- T1 month ..... -4.6%/T0, p<0.01 up to -11%
- T2 months ..... -10.5%/T0, p<0.01 up to -24% with 93% of responders

Bioimpedance:

- T1 month ..... -3.3%/T0, p<0.05 up to -23%
- T2 months ..... -5.1%/T0, p<0.01 up to -19%



Intenslim™ significantly decreases fat thickness after 2 months application.



Mean waist size reduction of 0.99 cm up to 3.90 cm after 2 months

# Correct Abdominal Massage Techniques:

## Anti-Cellulite Body Contour Cream

**Step 1:** Rub hands together briskly for 10 seconds. Dispense 4-5 pumps of ACBC Cream and apply in a clockwise direction from the belly button area outwards to cover the entire abdominal area. Repeat massage step three times using slow, gentle yet firm strokes.

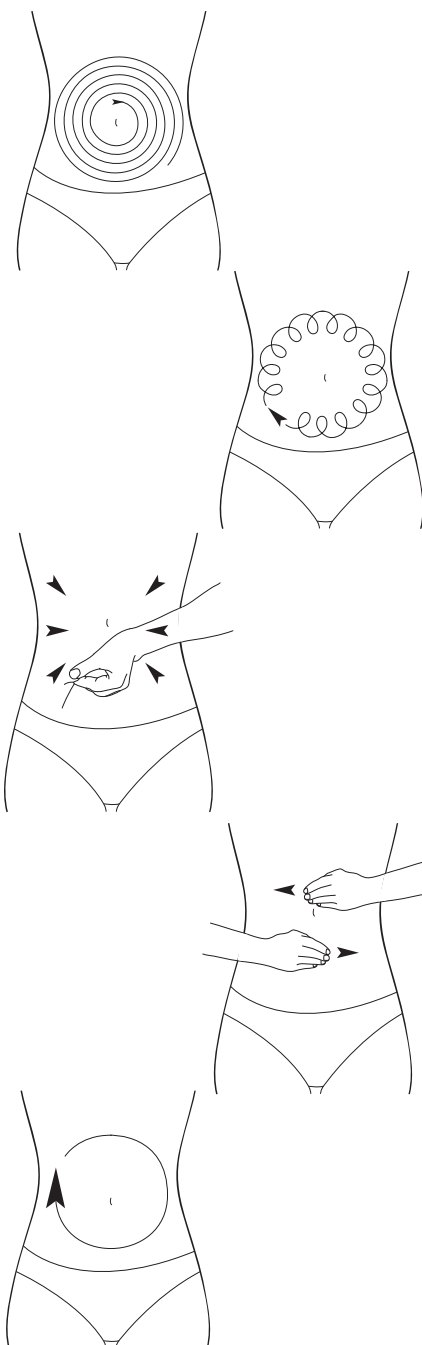
**Step 2:** Using fingertips, press gently into the skin and slowly massage in circular clockwise motions starting from just above the right lower hip. Repeat three to five times.

**Step 3:** Using fingertips, pinch and knead the skin from the outer corners inwards towards the belly button. Repeat three to five times on each side.

**Step 4:** Folding thumbs under the palms, slide hands straight across abdomen area in back and forth motions. Repeat ten times, with increasing speed.

**Step 5:** Finish with slow, gentle and fluid massage strokes in a clockwise direction.

- Perform massage steps for 5 minutes, morning and night.
- Regular massage helps to tone and strengthen the abdominal area, invigorate the internal organs and stimulate the digestive and circulatory systems to encourage regular bowel movement.



## Body Detox and Slimming Ampoule

**Step 6:** Apply 2 full nozzle squeezes on abdominal area, massage until product is absorbed.

### Expected Progress:

#### 1-14 days: The Preliminary Stage

The Cream & Ampoule penetrates into tissue, promoting the synthesis of desnutrin, a key enzyme in lipolysis activation

#### 14-28 days: The Breakdown Stage

Products work in boosting the lipolysis reaction by stimulating the expression of the desnutrin protein and improve the adipose tissue elasticity in order to help the adipocytes to return to their original shape.

#### 30-60 days: Increased Breakdown Stage

Further use of the Cream and Ampoule has been proved to provide more beneficial effects and to promote further effects.